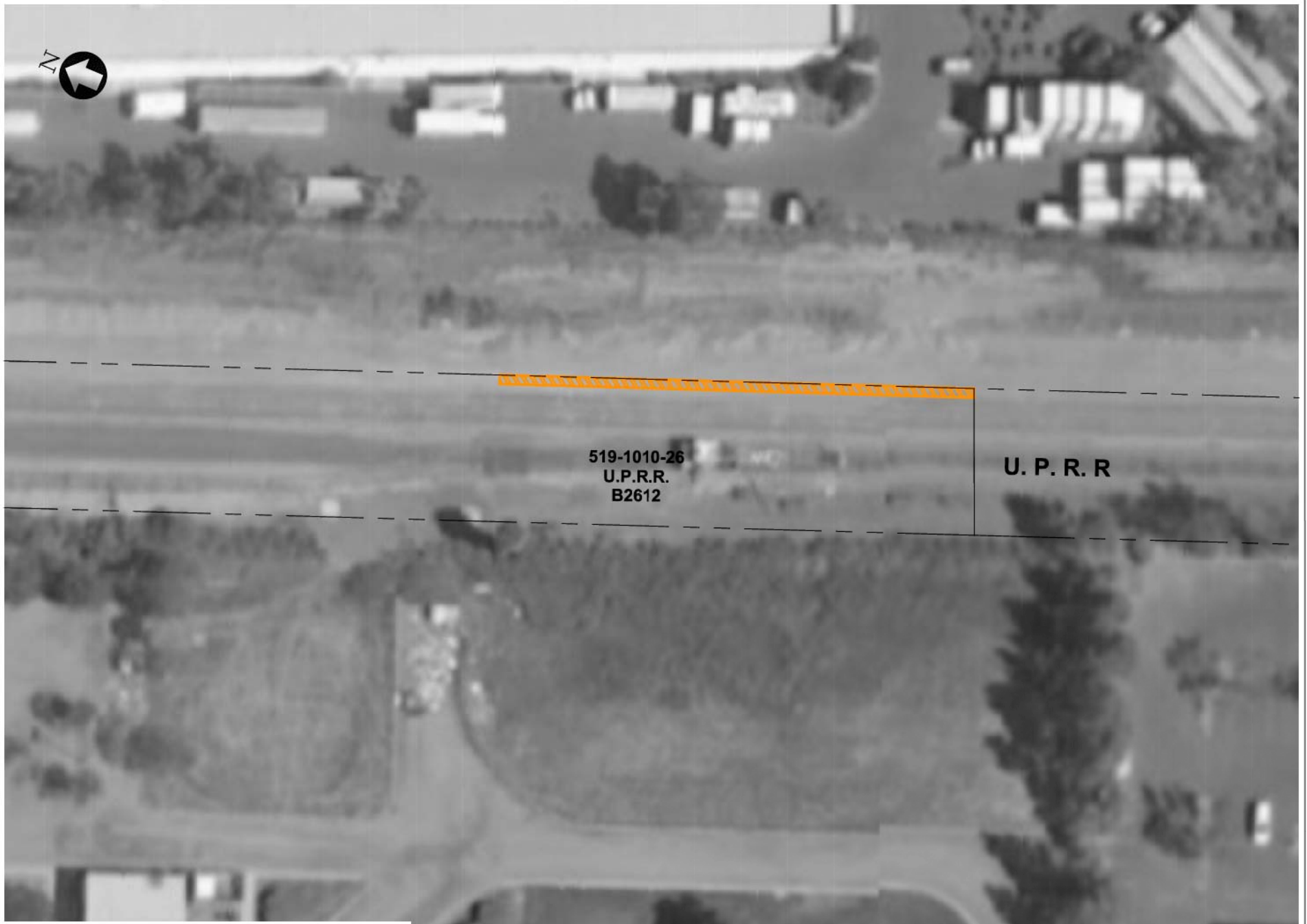


Appendix D
Socioeconomics Easements

Temporary Easements

TRAN_R Dec 15, 2010 - 2:09pm W:\LSCADD\Phase 2 Design\SWRT_L5\Work\Set.via\IMPORTANT FILES\ROW\DATABASE\Google_Earth_Aerial_Maps\ER_ROW_PARCEL_EXHIBITS\C204\C204-B2612-GE.dwg



LEGEND



PROPOSED TEMPORARY CONSTRUCTION EASEMENT (TCE) (720 SF)



GRAPHIC SCALE

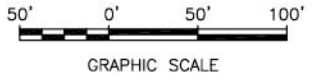
TRAN_R Dec 15, 2010 - 10:26am W:\SCAD\Phase 2 Design\SVRT LS\Work\Site - vs\IMPORTANT FILES\ROW\DATABASE_Google_Earth_Aerial - Maps\ER ROW PARCEL EXHIBITS\204-82077-06.dwg



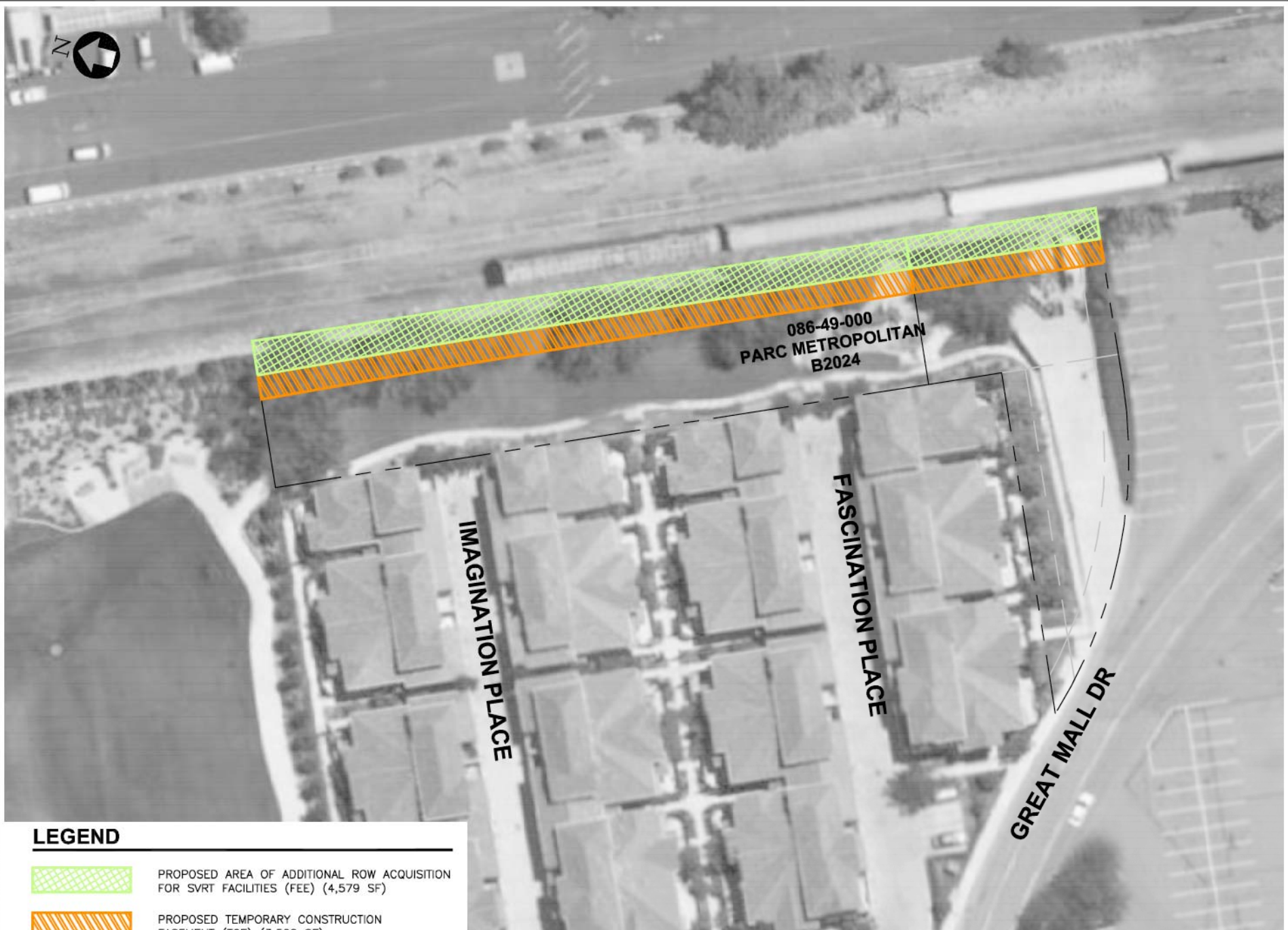
LEGEND





PROPOSED TEMPORARY CONSTRUCTION EASEMENT (TCE) (1,381 SF)

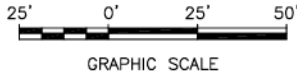


TRAN_R - Dec 14, 2010 - 10:16am W:\SCAD\Phase 2_Design\SVRT_US\Work\Site_Vis\IMPORTANT_FILES\ROW_DATABASE_Google_Earth_Aerial_Maps\PER ROW PARCEL_EXHIBITS\2013\2013-10204-CF.dwg



LEGEND

-  PROPOSED AREA OF ADDITIONAL ROW ACQUISITION FOR SVRT FACILITIES (FEE) (4,579 SF)
-  PROPOSED TEMPORARY CONSTRUCTION EASEMENT (TCE) (3,528 SF)








U.P.R.R.

GREAT MALL DR

086-24-060
MILPITAS MILLS
B2025

LEGEND

-  PROPOSED AREA OF ADDITIONAL ROW ACQUISITION FOR SVRT FACILITIES (FEE) (30,840 SF)
-  PROPOSED TEMPORARY CONSTRUCTION EASEMENT (TCE) (24,717 SF)
-  PROPOSED UTILITY EASEMENT (UE) OHE - 2,792 SF

FOR CONTINUATION SEE BELOW LEFT

U.P.R.R.

GREAT MALL DR

086-24-060
MILPITAS MILLS
B2025

FOR CONTINUATION SEE ABOVE RIGHT



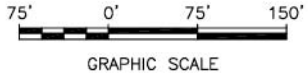
GRAPHIC SCALE

TRAN_R - Dec 14, 2010 - 2:02pm - W:\SCAD\Phase 2 - Design\SVRT - U.S. Works\Del - WA\IMPORTANT FILES\ROW\DATABASE\Google_Earth_Meridi - Maps\ER - ROW - PARCEL - EXHIBITS\CD03\CD03-B0209-GF.dwg

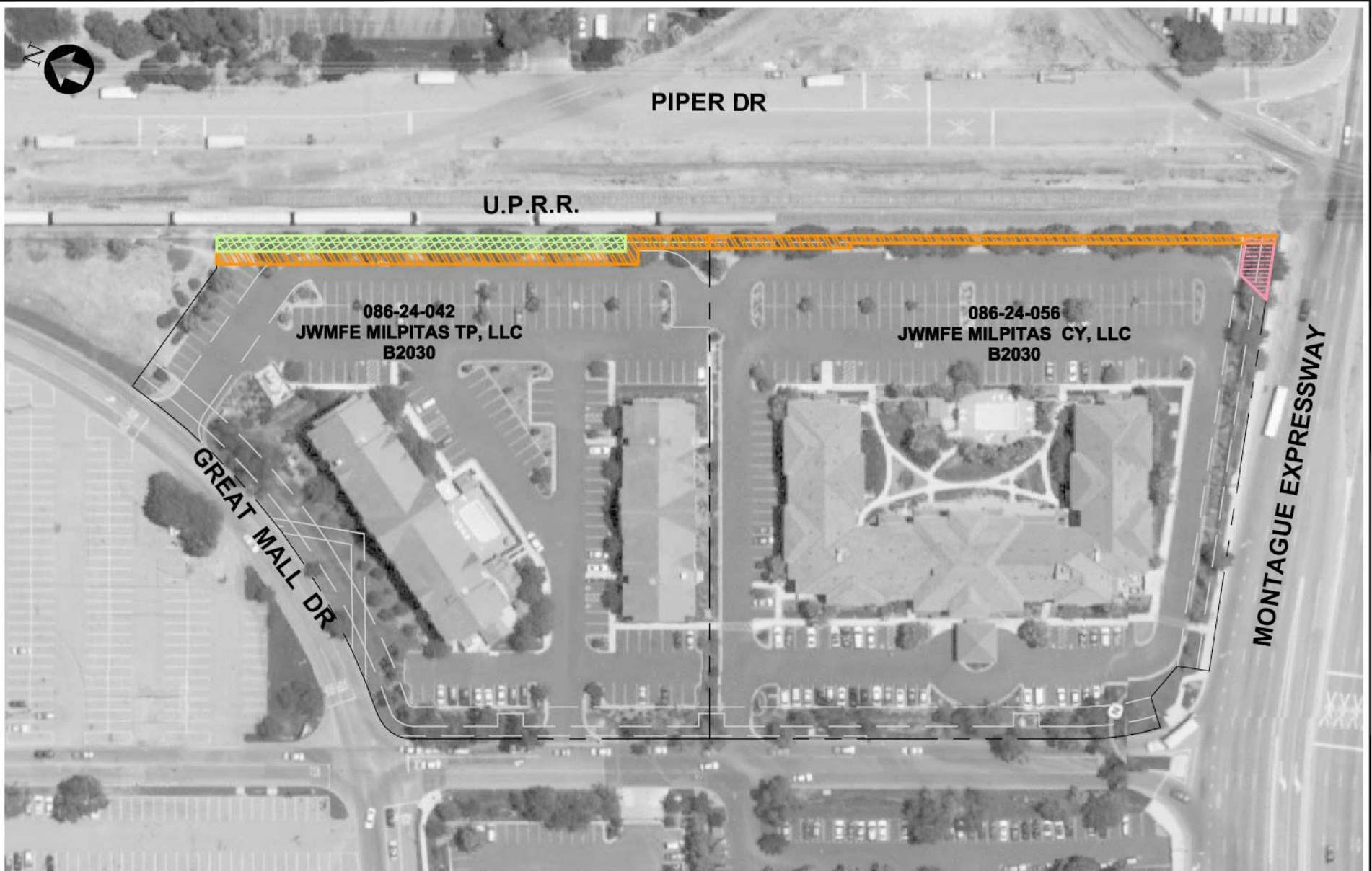


LEGEND




-  PROPOSED AREA OF ADDITIONAL ROW ACQUISITION FOR SVRT FACILITIES (FEE) (9,742 SF)
-  PROPOSED PUBLIC SERVICE EASEMENT (PSE) (25,157 SF)
-  PROPOSED TEMPORARY CONSTRUCTION EASEMENT (TCE) (15,987 SF)
-  PROPOSED STORM DRAINAGE EASEMENT (SDE) (18,704 SF)
-  PROPOSED UTILITY EASEMENT (UE) (OHE - 2,259 SF) (NIT - 3,041 SF)
-  PROPOSED SANITARY SEWER UTILITY EASEMENT (SSE) (10,586 SF)
-  PROPOSED JOINT TRENCH EASEMENT (JUE) (13,923 SF)

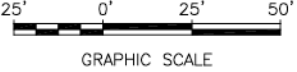


\\k Jan 12, 2011 1:30 PM W:\US0400\Phase 2 Design\SVRT US Work\Set V\A\IMPORTANT FILES\ROW DATABASES\Google_Earth_Aerial_Maps\ER ROW PARCEL_EXHIBITS\2013\2013-B2030-de.dwg



LEGEND

-  PROPOSED AREA OF ADDITIONAL ROW ACQUISITION FOR SVRT FACILITIES (FEE) (3,873 SF)
-  PROPOSED PUBLIC SERVICE EASEMENT (PSE) (909 SF)
-  PROPOSED TEMPORARY CONSTRUCTION EASEMENT (TCE) (7,034 SF)



TRAN_R - Dec 14, 2010 - 2:38pm W:\SCAD\Phase 2 Design\SVRT US Works\del WA\IMPORTANT FILES\ROW\DATABASE\Google_Earth_Maps_Maps\ER_ROW_PARCEL_EXHIBITS\CP03\CP03-B2084-GF.dwg






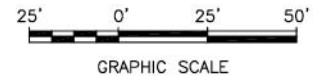
GLADDING CT

MONTAGUE EXPRESSWAY

092-08-077
S & B MILPITAS, LLC
B2084

LEGEND

-  PROPOSED AREA OF ADDITIONAL ROW ACQUISITION FOR SVRT FACILITIES (FEE) (392 SF)
-  PROPOSED PUBLIC SERVICE EASEMENT (PSE) (619 SF)
-  PROPOSED TEMPORARY CONSTRUCTION EASEMENT (TCE) (14,216 SF)







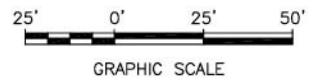
MONTAGUE EXPRESSWAY

**092-08-086
SILICON VALLEY WORLD TRADE CORP.
B2264**

GLADDING CT

LEGEND

-  PROPOSED AREA OF ADDITIONAL ROW ACQUISITION FOR SVRT FACILITIES (FEE) (103 SF)
-  PROPOSED TEMPORARY CONSTRUCTION EASEMENT (TCE) (1,747 SF)







MONTAGUE EXPRESSWAY



GLADDING CT

**092-08-054
ASHMAN
B2260**

LEGEND

-  PROPOSED AREA OF ADDITIONAL ROW ACQUISITION FOR SVRT FACILITIES (FEE) 290 SF
-  PROPOSED TEMPORARY CONSTRUCTION EASEMENT (TCE) 1,567 SF

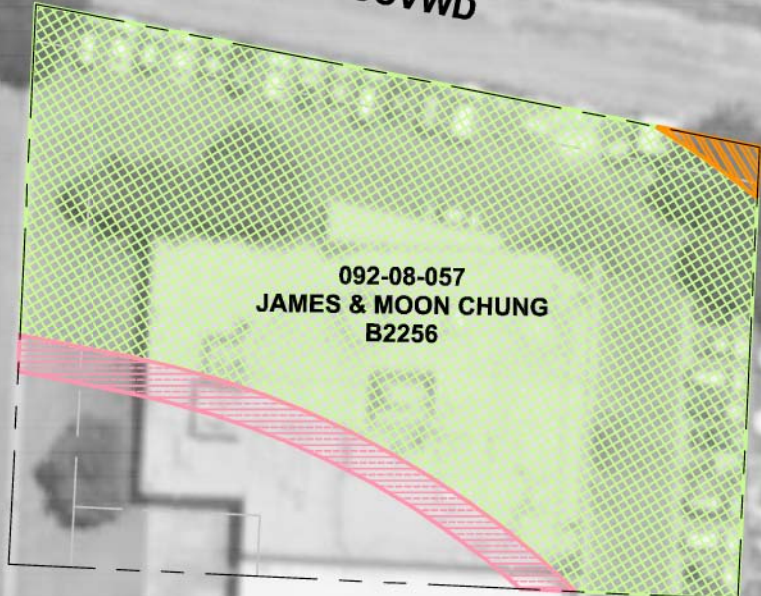


GRAPHIC SCALE






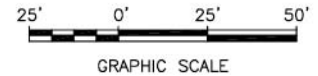
**MONTAGUE
EXPRESSWAY**

SCVWD



LEGEND

-  PROPOSED AREA OF ADDITIONAL ROW ACQUISITION FOR SVRT FACILITIES (FEE) (22,232 SF)
-  PROPOSED PUBLIC SERVICE EASEMENT (PSE) (1,654 SF)
-  PROPOSED TEMPORARY CONSTRUCTION EASEMENT (TCE) (196 SF)








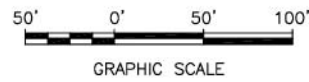
MONTAGUE EXPRESSWAY

GLADDING CT

**092-08-084
JACK & MARIE COX
B2257**

LEGEND


-  PROPOSED AREA OF ADDITIONAL ROW ACQUISITION FOR SVRT FACILITIES (FEE) (50,932 SF)
-  PROPOSED PUBLIC SERVICE EASEMENT (PSE) (3,518 SF)
-  PROPOSED TEMPORARY CONSTRUCTION EASEMENT (TCE) (13,504 SF)

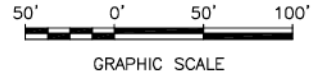


TRAN_R - Jan 10, 2011 - 3:05pm W:\SCAD\Projects 2 - Design\SVRT - LS\Works\Map - VA\IMPORTANT FILES\ROW\DATA\MAPS\Google_Earth_Aerial - Maps\ER ROW PARCEL - EXHIBITS\CT03\CT03-B2250-0F.dwg



LEGEND



-  PROPOSED AREA OF ADDITIONAL ROW ACQUISITION FOR SVRT FACILITIES (FEE) (1,565 SF)
-  PROPOSED PUBLIC SERVICE EASEMENT (PSE) (5,613 SF)
-  PROPOSED TEMPORARY CONSTRUCTION EASEMENT (TCE) (9,779 SF)
-  PROPOSED STORM DRAINAGE EASEMENT (SDE) (879 SF)
-  PROPOSED UTILITY EASEMENT (UE) (AIR PRODUCTS - 2,026 SF)
-  PROPOSED SANITARY SEWER UTILITY EASEMENT (SSE) (3,674 SF)
-  PROPOSED JOINT UTILITY EASEMENT (JUE) (4,466 SF)

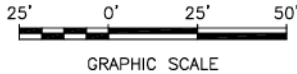


TRAN_R - Dec 13, 2010 - 2:03pm W:\LSCAD\Phase 2 Design\SWT US Works\del WA\IMPORTANT FILES\ROM\DATBASE\Google_Earth_Merit - Maps\ER_ROM_PARCEL_EXHIBITS\CD01\CD01-B2576-GE.dwg



LEGEND







-  PROPOSED TEMPORARY CONSTRUCTION EASEMENT (TCE) (800 SF)
-  PROPOSED INGRESS / EGRESS EASEMENT (IEE) (4,642 SF)

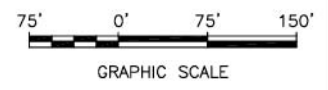




TRAN_R - Jan 11, 2011 - 10:41am W:\SPAD\Phase 2 - Design\SVT - US\Work\Site - VA\IMPORTANT FILES\ROW DATABASE\Google - Earth - Aerial - Maps\ER ROW_PANOR - Parcel Exhibits\201 - 0204 - 06.dwg





LEGEND

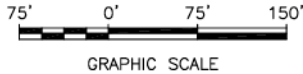
- 
 PROPOSED TEMPORARY CONSTRUCTION EASEMENT (TCE) (27,640 SF)
- 
 PROPOSED INGRESS / EGRESS EASEMENT (IEE) (25,426 SF)
- 
 PROPOSED UTILITY EASEMENT (UE) (MCI - 2,614 SF) (CHEVRON - 2,715 SF)
- 
 PROPOSED CONSTRUCTION STAGING AREA (CSA) OR LAYDOWN EASEMENT (323,192 SF)
- 
 PROPOSED TEMPORARY INGRESS / EGRESS EASEMENT (TIEE) (16,415 SF)
- 
 PROPOSED JOINT UTILITY EASEMENT (JUE) (10,091 SF)



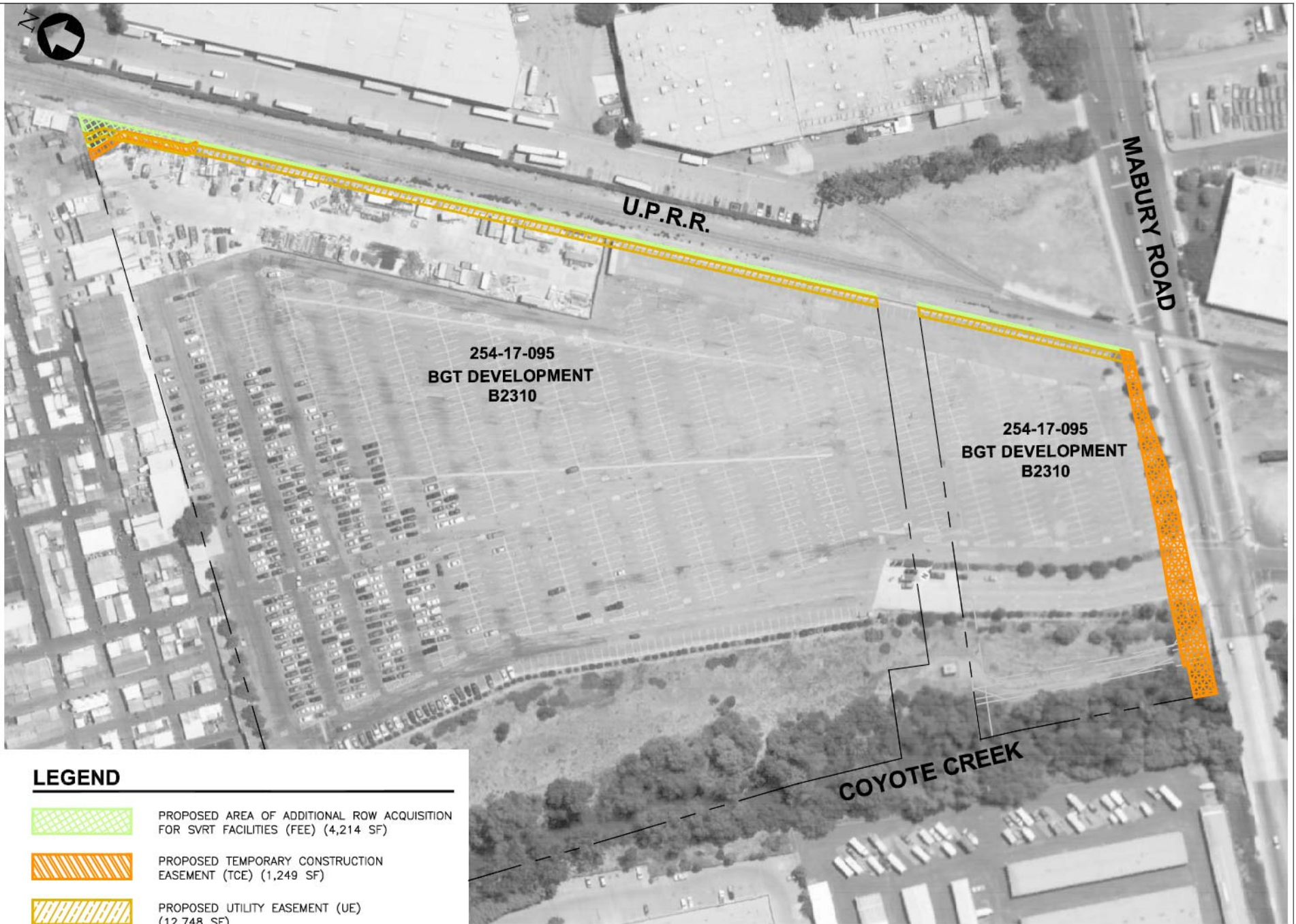


LEGEND





-  PROPOSED AREA OF ADDITIONAL ROW ACQUISITION FOR SVRT FACILITIES (FEE) (30,192 SF)
-  PROPOSED TEMPORARY CONSTRUCTION EASEMENT (TCE) (21,912 SF)
-  PROPOSED UTILITY EASEMENT (UE) (MCI - 4,182 SF) (CHEVRON - 4,136 SF)
-  PROPOSED JOINT UTILITY EASEMENT (JUE) (9,680 SF)

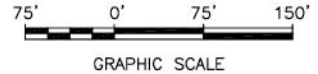


TRAN_R_Doc_10_2010 - 11:18am W:\ISCAD\Phase 2 Design\SVRT US West\Map_Vis\IMPORTANT FILES\ROW DATABASE_Google Earth_Aerial_Map\ER ROW PARCEL EXHIBITS\2011\2011-9210-GE.dwg

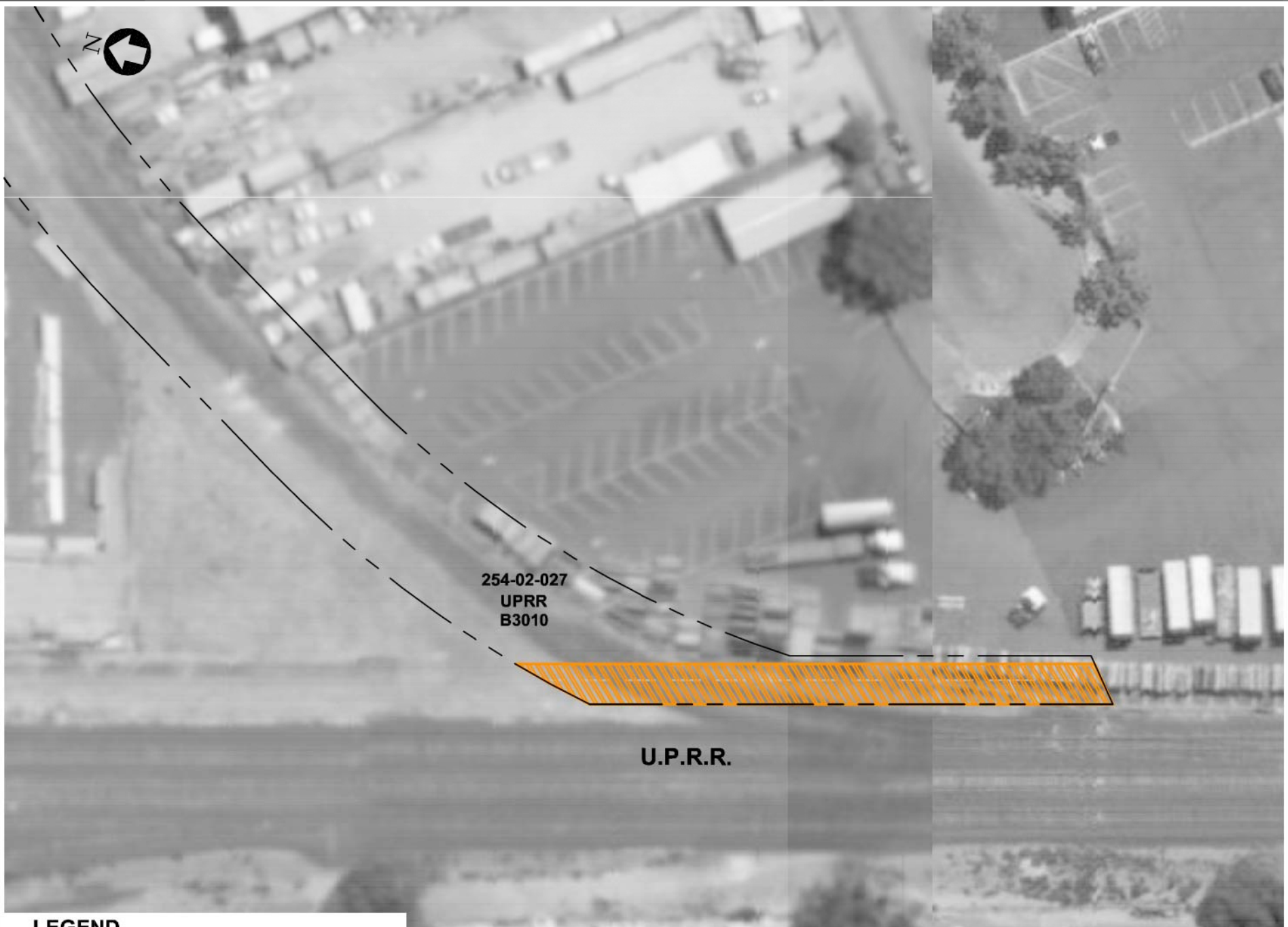


LEGEND

-  PROPOSED AREA OF ADDITIONAL ROW ACQUISITION FOR SVRT FACILITIES (FEE) (4,214 SF)
-  PROPOSED TEMPORARY CONSTRUCTION EASEMENT (TCE) (1,249 SF)
-  PROPOSED UTILITY EASEMENT (UE) (12,748 SF)
-  PROPOSED ROADWAY EASEMENT (RWE) (11,243 SF)



TRAN_R - Dec 13, 2010 - 2:22pm W:\SCAD\Phase 2 Design\SWT US Works\del WA\IMPORTANT FILES\ROW\DATAS\Google_Earth_Maps\ER ROW PARCEL - Maps\ER ROW PARCEL - EXHIBITS\CD01\CD01-B3010-GF.dwg



LEGEND



PROPOSED TEMPORARY CONSTRUCTION EASEMENT (TCE) (3,828 SF)

U.P.R.R.



GRAPHIC SCALE

Permanent Easements



LEGEND



PROPOSED INGRESS / EGRESS EASEMENT
(IEE) (8,720 SF)



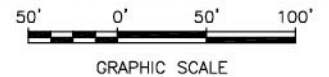
GRAPHIC SCALE



LEGEND



PROPOSED INGRESS / EGRESS EASEMENT
(IEE) (8,720 SF)





U.P.R.R.

519-0850-062-02
MURCO INDUSTRIAL
B2544

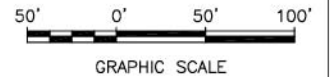
WARM SPRINGS BOULEVARD



LEGEND



PROPOSED INGRESS / EGRESS EASEMENT
(IEE) (16,395 SF)



TRAN_R Dec 14, 2010 8:09pm W:\SCADD\Phase 2 Design\SWRT_L5\Work\Set_VA\IMPORTANT FILES\ROW_DATABASE\Google_Earth_Maps\ER_ROW_PARCEL_EXHIBITS\C204\C204-B2050A-06.dwg



LEGEND



PROPOSED INGRESS / EGRESS EASEMENT (IEE) (11,539 SF)



PROPOSED STORM DRAINAGE EASEMENT (SDE) (330 SF)



GRAPHIC SCALE

TRAN_R Dec 15, 2010 - 10:33am W:\SCADD\Phase 2_Design\SVRT_US\Work\Site_Vis\IMPORTANT_FILES\ROW_DATABASE_Google_Earth_Aerial_Maps\ER_ROW_PARCEL_EXHIBITS\204\204-B2078-06.dwg





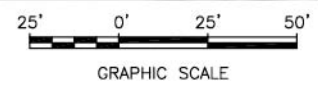
DIXON LANDING ROAD

022-02-003
MILPITAS MOBILE HOME ESTATES
B2078

U.P.R.R.

LEGEND

-  PROPOSED AREA OF ADDITIONAL ROW ACQUISITION FOR SVRT FACILITIES (FEE) (3,781 SF)
-  PROPOSED UTILITY EASEMENT (UE) (2,538 SF)



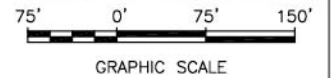
TRAN_R Dec 15, 2010 1:59pm W:\SCADD\Phase 2 Design\SVRT_L5\Work\Set_V2\IMPORTANT FILES\ROW\DATABASE\Google_Earth_Aerial_Maps\ER_ROW_PARCEL_EXHIBITS\C204\C204-B2603-GE.dwg



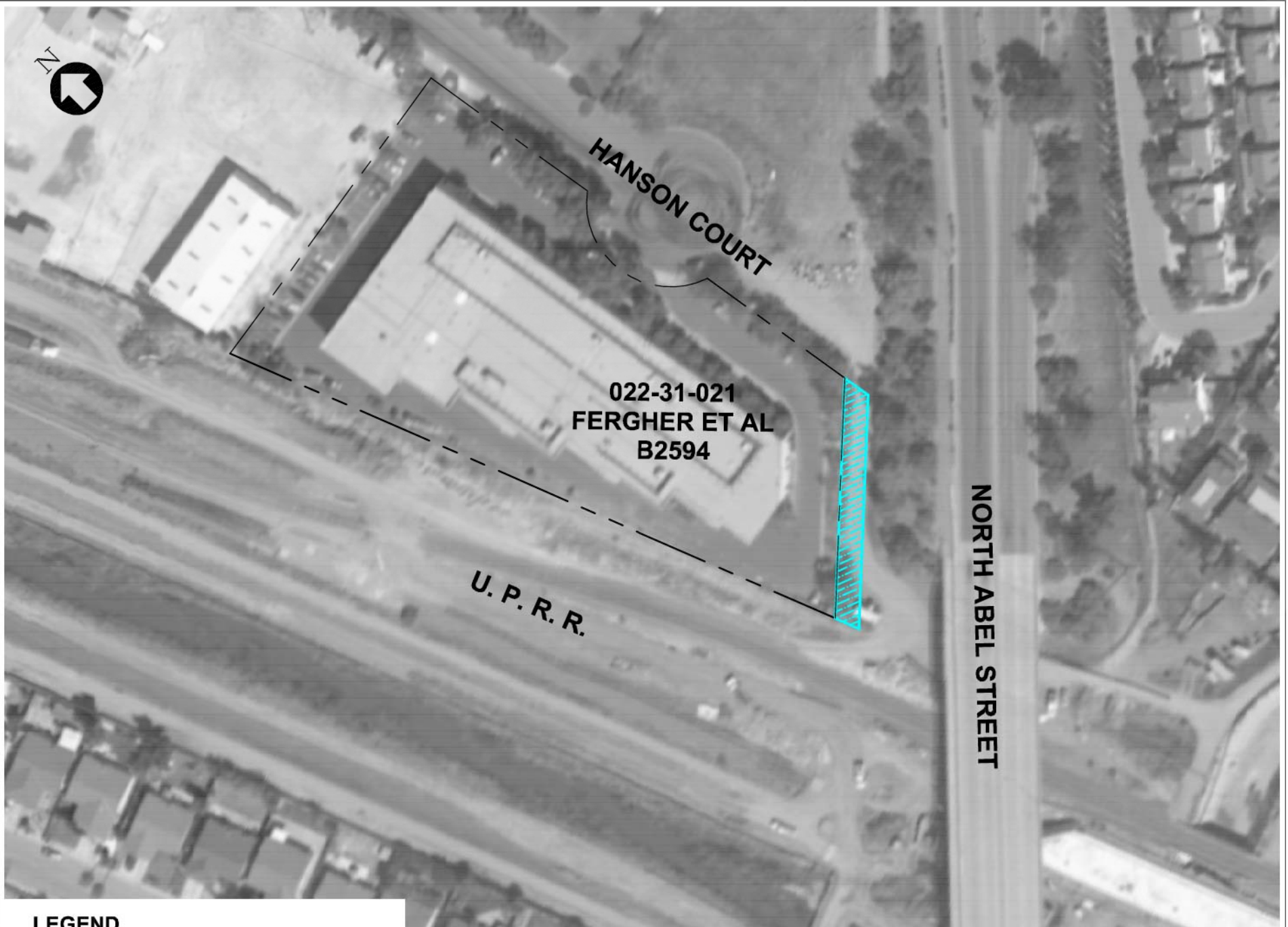
LEGEND



PROPOSED INGRESS / EGRESS
EASEMENT (IEE) (4994 SF)



TRAN_R Doc: 11_15_2010 - 4:08pm W:\USCAD\Phase 2 Design\SWR US Works\del WA\IMPORTANT FILES\FROM DATABASE\Google Earth_Merid_Maps\ER FROM PARCEL EXHIBITS\CD04\CD04-B2594-GE.dwg



LEGEND



PROPOSED INGRESS / EGRESS EASEMENT (IEE) (3,938 SF)



GRAPHIC SCALE

TRAN_R Dec 14, 2010 - 4:56pm W:\SCAD\Phase 2 Design\SWRT_LIS\Work\Set_V2\IMPORTANT FILES\ROW\DATABASE\Google_Earth_Maps\ER_ROW_PARCEL_EXHIBITS\CD04\CD04-B2017-GE.dwg



LEGEND



PROPOSED INGRESS / EGRESS EASEMENT (IEE) (12,478 SF)



GRAPHIC SCALE

TRAN_R Jan 11, 2011 - 3:33pm W:\SCAD\Process 2 Design\SWRT L5\Works\Mkt. W\IMPORTANT FILES\VDVA\DATA\MSE\Google_Earth_Aerial_Maps\ER ROW PARCEL EXHIBITS\CD04\CD04-B001B-0F.dwg



LEGEND



PROPOSED INGRESS / EGRESS EASEMENT (IEE) (10,283 SF)



GRAPHIC SCALE

TRAN_R Dec 14, 2010 - 5:04pm W:\SCAD\0\Phase 2 Design\SVRT_L5\Work\Set_V2\IMPORTANT FILES\ROW\DATABASE\Google_Earth_Aerial_Maps\ER_ROW_PARCEL_EXHIBITS\CD04\CD04-B2021-GE.dwg



EDGEWATER DR

MEADOWLAND DR

U.P.R.R.

028-23-012
CALWEST INDUSTRIAL
HOLDINGS, INC.
B2021

RAILROAD CT

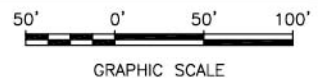
LEGEND



PROPOSED AREA OF ADDITIONAL ROW ACQUISITION FOR SVRT FACILITIES (FEE) (23870 SF)



PROPOSED INGRESS / EGRESS EASEMENT (IEE) (10110 SF)








U.P.R.R.

GREAT MALL DR

086-24-060
MILPITAS MILLS
B2025

LEGEND

-  PROPOSED AREA OF ADDITIONAL ROW ACQUISITION FOR SVRT FACILITIES (FEE) (30,840 SF)
-  PROPOSED TEMPORARY CONSTRUCTION EASEMENT (TCE) (24,717 SF)
-  PROPOSED UTILITY EASEMENT (UE) OHE - 2,792 SF

FOR CONTINUATION SEE BELOW LEFT

U.P.R.R.

GREAT MALL DR

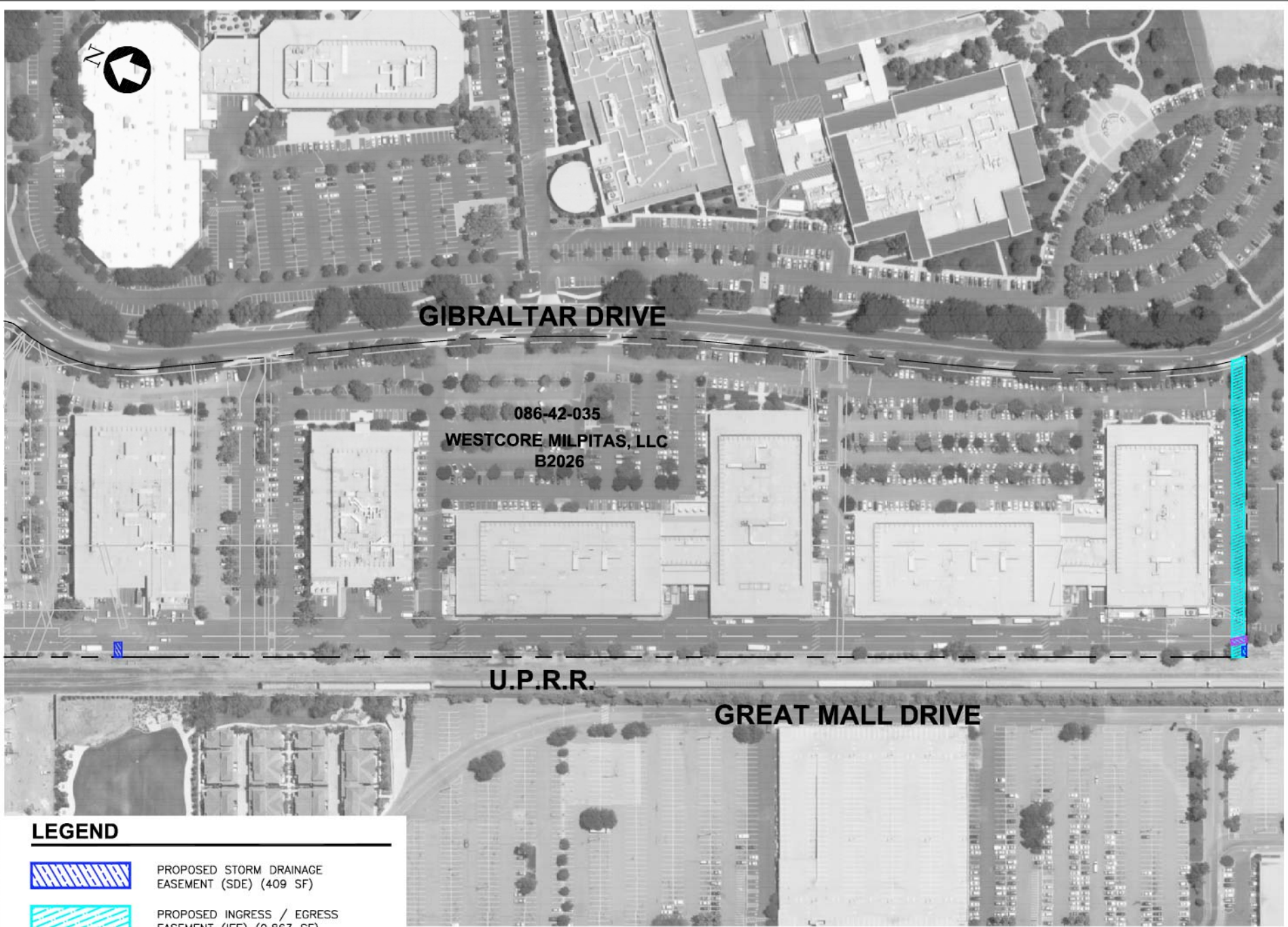
086-24-060
MILPITAS MILLS
B2025

FOR CONTINUATION SEE ABOVE RIGHT



GRAPHIC SCALE

TRAN_R - Dec 14, 2010 - 11:08am W:\SCAD\Phase 2 Design\SVT US West\Site V\IMPORTANT FILES\ROW DATABASE_Google Earth_Aerial_Maps\ER ROW PARCEL EXHIBITS\2010\2010-10-28-CF.dwg






GIBRALTAR DRIVE

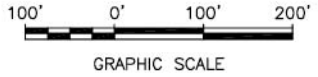
**086-42-035
WESTCORE MILPITAS, LLC
B2026**

U.P.R.R.

GREAT MALL DRIVE

LEGEND

-  PROPOSED STORM DRAINAGE EASEMENT (SDE) (409 SF)
-  PROPOSED INGRESS / EGRESS EASEMENT (IEE) (9,863 SF)
-  PROPOSED SANITARY SEWER EASEMENT (SSE) (259 SF)



TRAN_R - Jan 11, 2011 - 10:59pm W:\SCAD\Phase 2 - Design\SVRT - US\Work\Site - VA\IMPORTANT FILES\ROW DATABASE\Google_Earth_Aerial - Maps\ER ROW_PANCEL_EXHIBITS\0203\0203-B2028-df.dwg








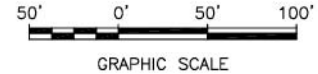
086-32-037
SCS DEVELOPMENT
B2028

PIPER DR

U.P.R.R.

LEGEND

-  PROPOSED AREA OF ADDITIONAL ROW ACQUISITION FOR SVRT FACILITIES (FEE) (413 SF)
-  PROPOSED PUBLIC SERVICE EASEMENT (PSE) (3,711 SF)
-  PROPOSED STORM DRAINAGE EASEMENT (SDE) (5,388 SF)
-  PROPOSED UTILITY EASEMENT (UE) (NIT - 2,668 SF) (OHE - 11,740 SF)
-  PROPOSED SANITARY SEWER UTILITY EASEMENT (SSE) (4,553 SF)



TRAN_R - Dec 14, 2010 - 2:02pm - W:\SCAD\Phase 2 - Design\SVRT - U.S.Works\del - WA\IMPORTANT FILES\ROW\DATABASE\Google_Earth_Meridi - Maps\ER - ROW - PARCEL - EXHIBITS\CD03\CD03-B0209-GF.dwg



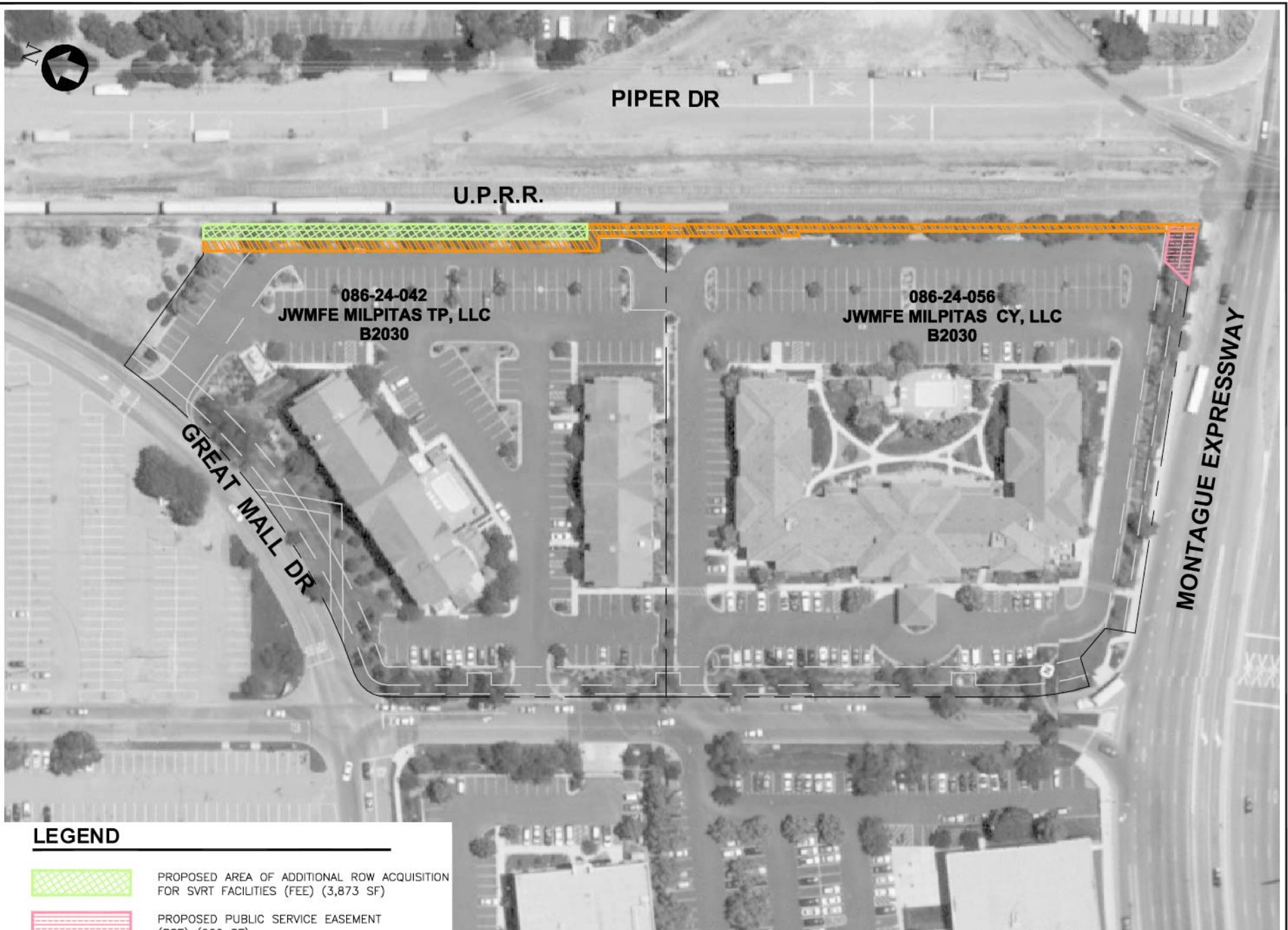
LEGEND

-  PROPOSED AREA OF ADDITIONAL ROW ACQUISITION FOR SVRT FACILITIES (FEE) (9,742 SF)
-  PROPOSED PUBLIC SERVICE EASEMENT (PSE) (25,157 SF)
-  PROPOSED TEMPORARY CONSTRUCTION EASEMENT (TCE) (15,987 SF)
-  PROPOSED STORM DRAINAGE EASEMENT (SDE) (18,704 SF)
-  PROPOSED UTILITY EASEMENT (UE)
(OHE - 2,259 SF)
(NIT - 3,041 SF)
-  PROPOSED SANITARY SEWER UTILITY EASEMENT (SSE) (10,586 SF)
-  PROPOSED JOINT TRENCH EASEMENT (JUE) (13,923 SF)






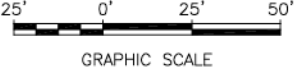
GRAPHIC SCALE

X:\K Jan 12, 2011 1:30 PM W:\S0400\Phase 2 Design\SVRT US Work\Set V\A\MPDPRANT FILES\ROW DATABASES\Google_Earth_Aerial_Maps\ER ROW PARCEL_EXHIBITS\2013\2013-B2030-de.dwg



LEGEND

-  PROPOSED AREA OF ADDITIONAL ROW ACQUISITION FOR SVRT FACILITIES (FEE) (3,873 SF)
-  PROPOSED PUBLIC SERVICE EASEMENT (PSE) (909 SF)
-  PROPOSED TEMPORARY CONSTRUCTION EASEMENT (TCE) (7,034 SF)



TRAN_R - Dec 14, 2010 - 3:58pm W:\SCAD\Phase 2 Design\SWR US Works\del WA\IMPORTANT FILES\FROM DATARASE\Google_Earth_Merid - MapAER - MapAER - FROM PARCEL - EXHIBITS\CD03\CD03-B2239-GF.dwg






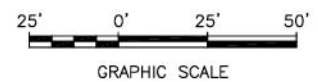
086-32-036
MILPITAS STATION (SAN JOSE) VENTURE, L.L.P.
B2239

PIPER DRIVE

U.P.R.R.

LEGEND

-  PROPOSED PUBLIC SERVICE EASEMENT (PSE) (2,613 SF)
-  PROPOSED UTILITY EASEMENT (UE) (NIT - 413 SF) (OHE - 1,750 SF)
-  PROPOSED UTILITY EASEMENT (UE) (509 SF)








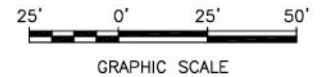
GLADDING CT

MONTAGUE EXPRESSWAY

092-08-077
S & B MILPITAS, LLC
B2084

LEGEND

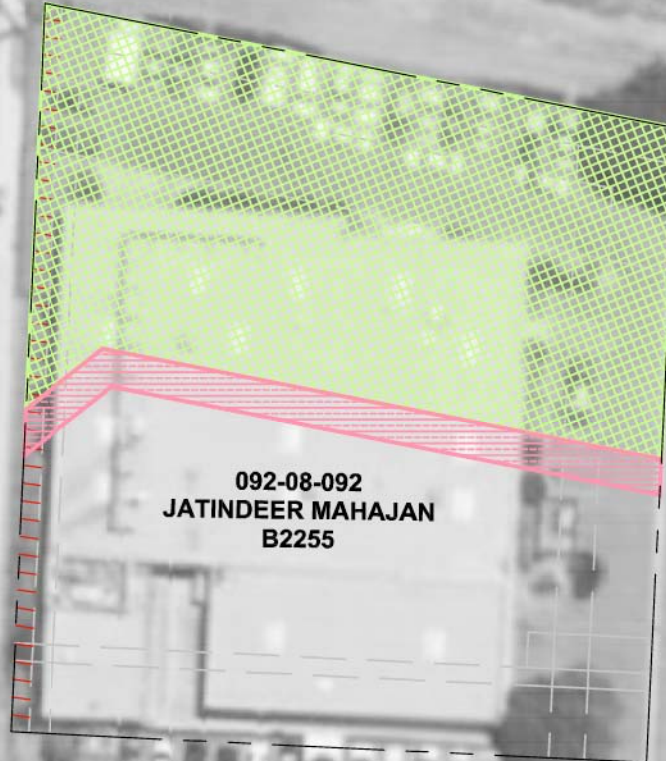
-  PROPOSED AREA OF ADDITIONAL ROW ACQUISITION FOR SVRT FACILITIES (FEE) (392 SF)
-  PROPOSED PUBLIC SERVICE EASEMENT (PSE) (619 SF)
-  PROPOSED TEMPORARY CONSTRUCTION EASEMENT (TCE) (14,216 SF)





SOUTH MILPITAS BLVD

MONTAGUE EXPRESSWAY



LEGEND



PROPOSED AREA OF ADDITIONAL ROW ACQUISITION FOR SVRT FACILITIES (FEE) (16,890 SF)



PROPOSED PUBLIC SERVICE EASEMENT (PSE) (1,880 SF)

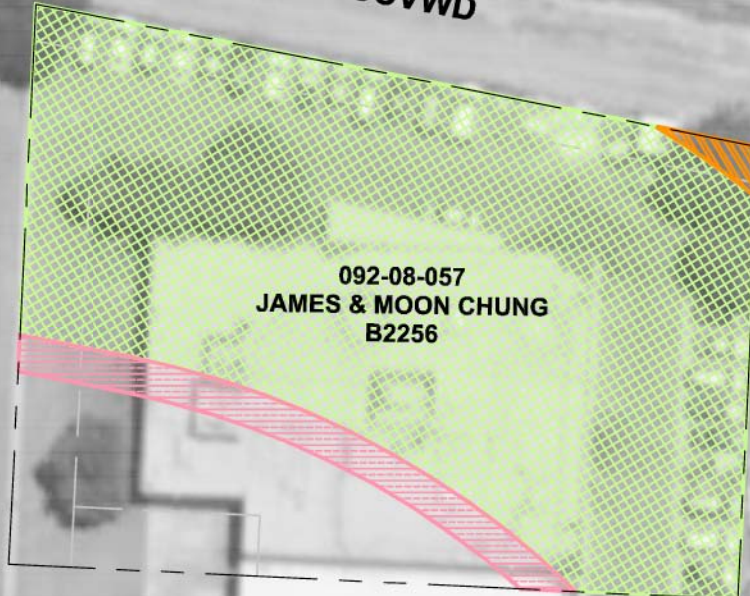


GRAPHIC SCALE






**MONTAGUE
EXPRESSWAY**

SCVWD



LEGEND

-  PROPOSED AREA OF ADDITIONAL ROW ACQUISITION FOR SVRT FACILITIES (FEE) (22,232 SF)
-  PROPOSED PUBLIC SERVICE EASEMENT (PSE) (1,654 SF)
-  PROPOSED TEMPORARY CONSTRUCTION EASEMENT (TCE) (196 SF)



GRAPHIC SCALE






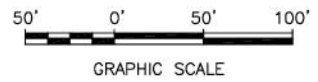
MONTAGUE EXPRESSWAY

GLADDING CT

**092-08-084
JACK & MARIE COX
B2257**

LEGEND








-  PROPOSED AREA OF ADDITIONAL ROW ACQUISITION FOR SVRT FACILITIES (FEE) (50,932 SF)
-  PROPOSED PUBLIC SERVICE EASEMENT (PSE) (3,518 SF)
-  PROPOSED TEMPORARY CONSTRUCTION EASEMENT (TCE) (13,504 SF)

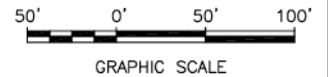


TRAN_R - Jan 10, 2011 - 3:05pm W:\SCAD\Projects 2 - Design\SVRT - LS\Works\Site - VA\IMPORTANT FILES\ROW\DATA\MSE\Google_Earth_Aerial - Mega\ER ROW PARCEL - EXHIBITS\CT03\CT03-B2250-0F.dwg

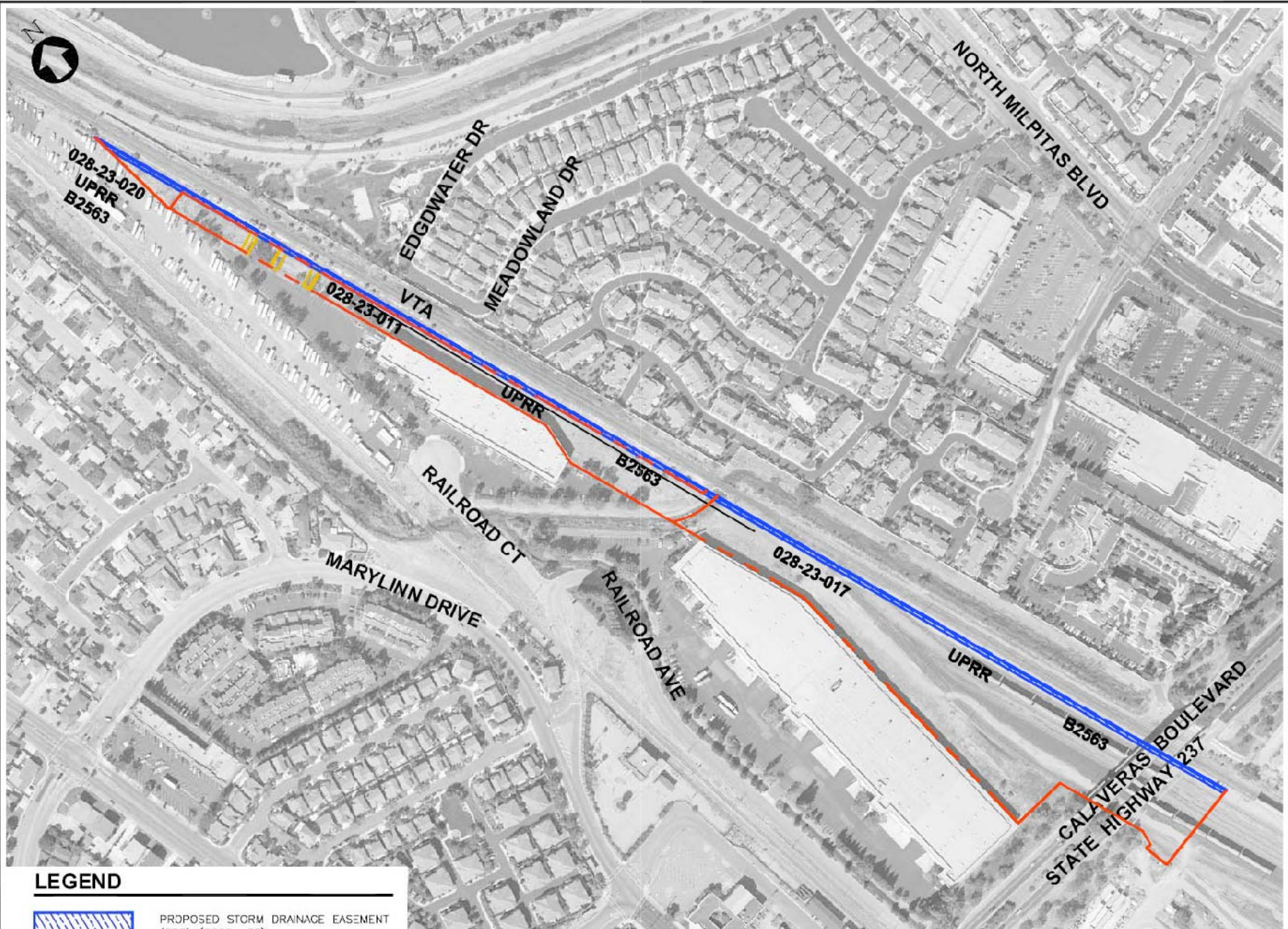


LEGEND



-  PROPOSED AREA OF ADDITIONAL ROW ACQUISITION FOR SVRT FACILITIES (FEE) (1,565 SF)
-  PROPOSED PUBLIC SERVICE EASEMENT (PSE) (5,613 SF)
-  PROPOSED TEMPORARY CONSTRUCTION EASEMENT (TCE) (9,779 SF)
-  PROPOSED STORM DRAINAGE EASEMENT (SDE) (879 SF)
-  PROPOSED UTILITY EASEMENT (UE) (AIR PRODUCTS - 2,026 SF)
-  PROPOSED SANITARY SEWER UTILITY EASEMENT (SSE) (3,674 SF)
-  PROPOSED JOINT UTILITY EASEMENT (JUE) (4,466 SF)



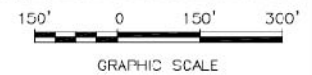
May 25, 2010 - 10:15am H:\2009\LEW VTA - SDRS\LEW-VTA\275A\2704-091945.dwg



LEGEND

-  PROPOSED STORM DRAINAGE EASEMENT (SDE) (32251 SF)
-  PROPOSED UTILITY EASEMENT (UE) (3639 SF)



H-13

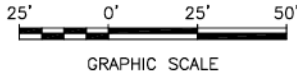


TRAN_R - Dec 13, 2010 - 2:03pm W:\LSCAD\Phase 2 Design\SWT US Works\del WA\IMPORTANT FILES\ROM\DATBASE\Google_Earth_Merid - Maps\ER ROM PARCEL EXHIBITS\CD01\CD01-B2576-GE.dwg



LEGEND







-  PROPOSED TEMPORARY CONSTRUCTION EASEMENT (TCE) (800 SF)
-  PROPOSED INGRESS / EGRESS EASEMENT (IEE) (4,642 SF)

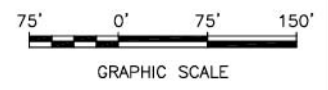




TRAN_R - Jan 11, 2011 - 10:41am W:\SPAD\Phase 2 - Design\SVT - US\Work\Site - VA\IMPORTANT FILES\ROW DATABASE\Google - Earth - Aerial - Maps\ER ROW_PANOR - Exhibits\201 - 0204 - 02.dwg





LEGEND

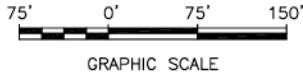
-  PROPOSED TEMPORARY CONSTRUCTION EASEMENT (TCE) (27,640 SF)
-  PROPOSED INGRESS / EGRESS EASEMENT (IEE) (25,426 SF)
-  PROPOSED UTILITY EASEMENT (UE) (MCI - 2,614 SF) (CHEVRON - 2,715 SF)
-  PROPOSED CONSTRUCTION STAGING AREA (CSA) OR LAYDOWN EASEMENT (323,192 SF)
-  PROPOSED TEMPORARY INGRESS / EGRESS EASEMENT (TIEE) (16,415 SF)
-  PROPOSED JOINT UTILITY EASEMENT (JUE) (10,091 SF)



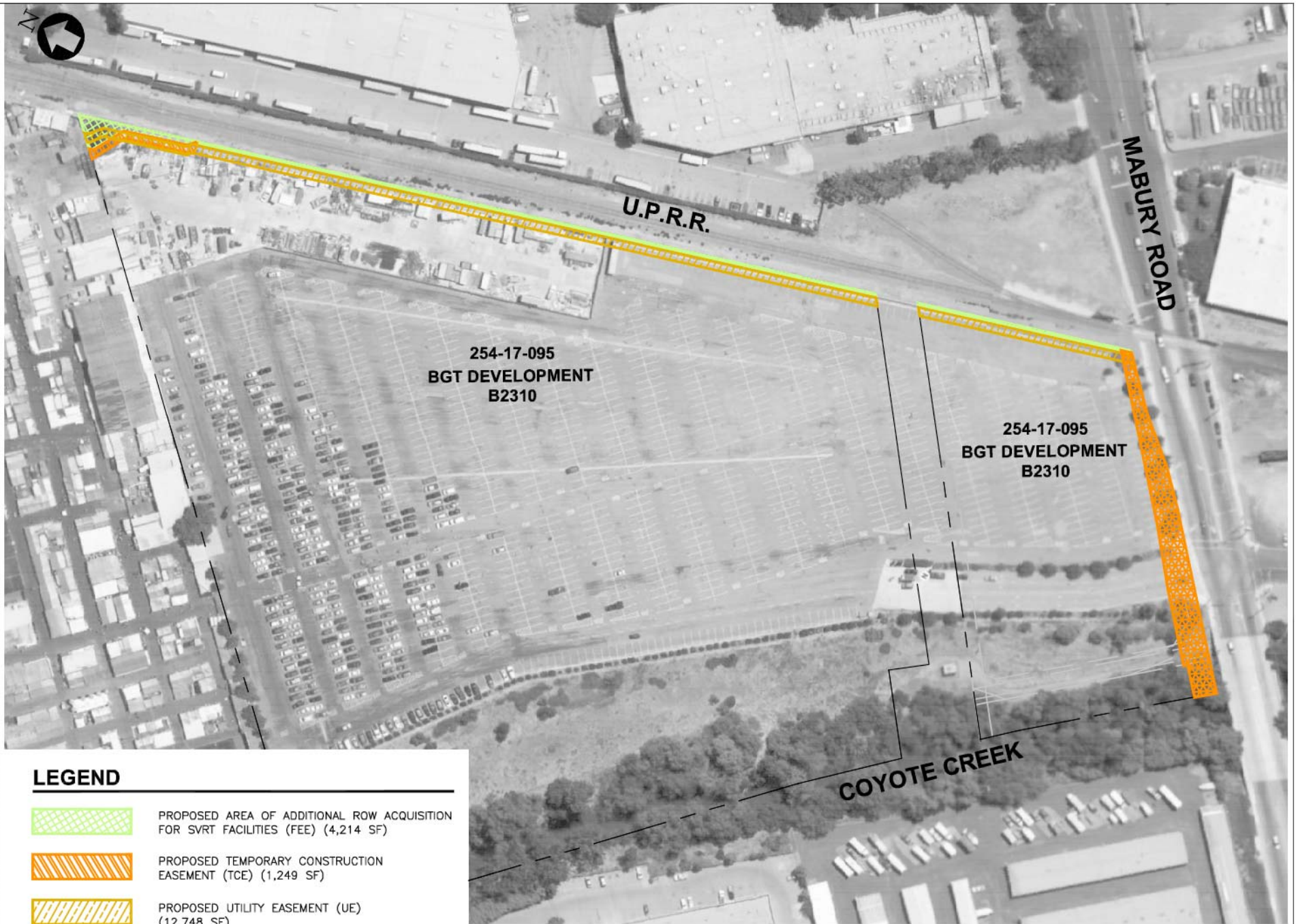


LEGEND





-  PROPOSED AREA OF ADDITIONAL ROW ACQUISITION FOR SVRT FACILITIES (FEE) (30,192 SF)
-  PROPOSED TEMPORARY CONSTRUCTION EASEMENT (TCE) (21,912 SF)
-  PROPOSED UTILITY EASEMENT (UE) (MCI - 4,182 SF) (CHEVRON - 4,136 SF)
-  PROPOSED JOINT UTILITY EASEMENT (JUE) (9,680 SF)

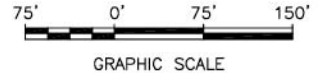


TRAN_R Dns_10_2010 - 11:18am W:\ISCAD\Phase 2 Design\SVRT US West\Map_Vis\IMPORTANT FILES\ROW DATABASE_Google Earth_Aerial_Maps\ER ROW PARCEL EXHIBITS\2011\2011-9210-GE.dwg



LEGEND

-  PROPOSED AREA OF ADDITIONAL ROW ACQUISITION FOR SVRT FACILITIES (FEE) (4,214 SF)
-  PROPOSED TEMPORARY CONSTRUCTION EASEMENT (TCE) (1,249 SF)
-  PROPOSED UTILITY EASEMENT (UE) (12,748 SF)
-  PROPOSED ROADWAY EASEMENT (RWE) (11,243 SF)



TRAN_R - Dec 13, 2010 - 1:33pm W:\SSCAD\Phase 2 Design\SVRT US Works\del WA\IMPORTANT FILES\ROW\DATABASE\Google_Earth_Maps\ER_ROW_PARCEL_EXHIBITS\CD01\CD01-B2311-GF.dwg



LEGEND



PROPOSED AREA OF ADDITIONAL ROW ACQUISITION FOR SVRT FACILITIES (FEE) (107 SF)

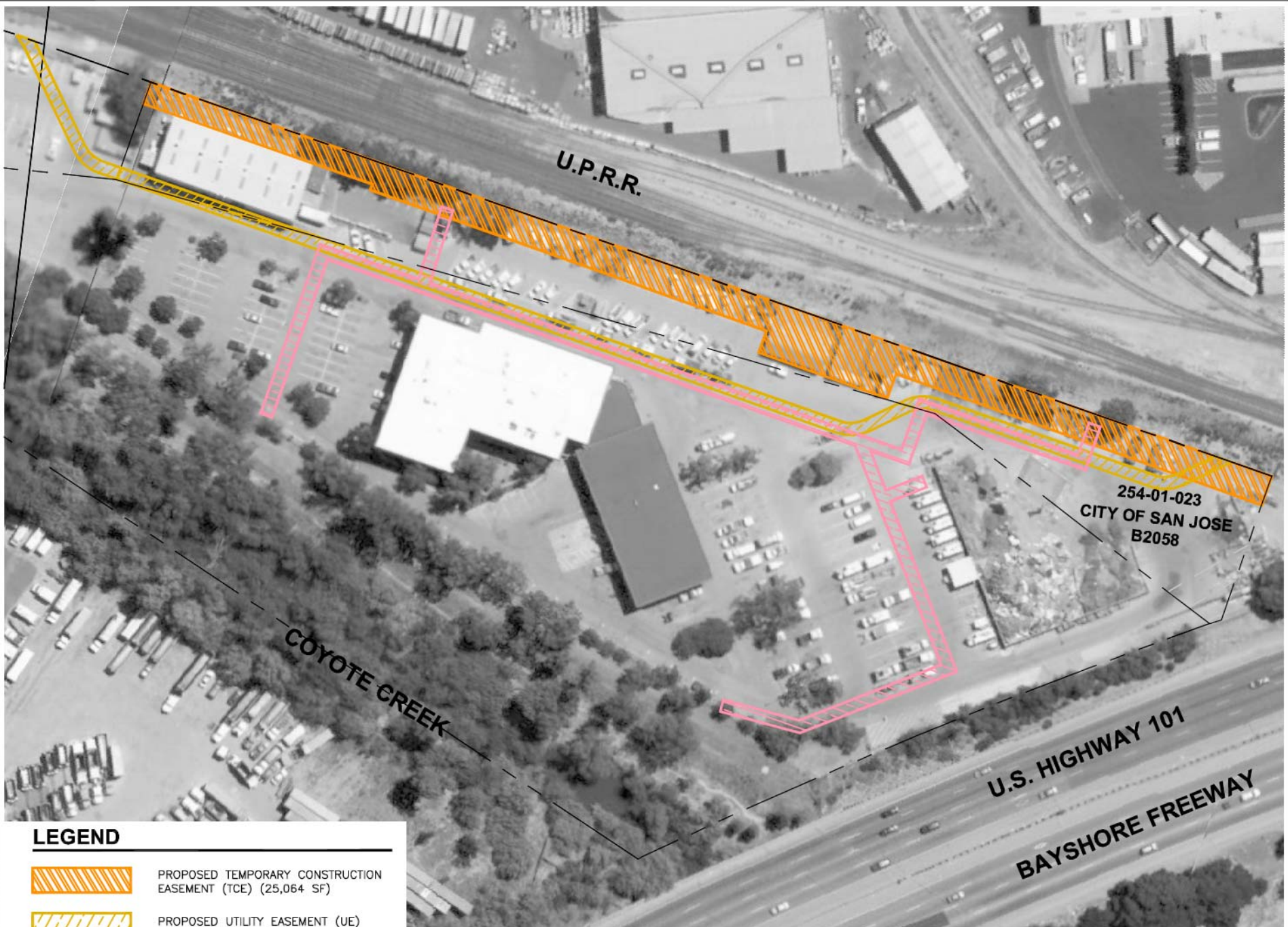


PROPOSED UTILITY EASEMENT (UE) (535 SF)






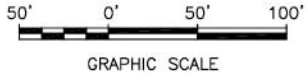
GRAPHIC SCALE

TRAN_R - Dec 13, 2010 - 11:39am W:\SCAD\Phase 2 Design\SVT US West\Site V\IMPORTANT FILES\ROW DATABASE_Google Earth_Aerial_Maps\ER ROW PARCEL EXHIBITS\201\201-12098-CF.dwg



LEGEND

-  PROPOSED TEMPORARY CONSTRUCTION EASEMENT (TCE) (25,064 SF)
-  PROPOSED UTILITY EASEMENT (UE) (MCI - 11,097 SF)
-  PROPOSED PUBLIC SERVICE EASEMENT (PSE) (13,583 SF)



TRAN_R - Dec 13, 2010 - 2:48pm W:\SCAD\Phase 2 Design\SVRT US Works\del WA\IMPORTANT FILES\ROW\DATBASE\Google_Earth_Maps\ER_ROW_PARCEL_EXHIBITS\CD01\CD01-83062-GF.dwg



LAS PLUMAS AVENUE



254-02-000
UNKNOWN
B3062

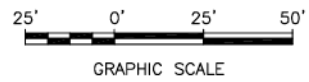
N MARBURG WAY

BAYSHORE FREEWAY
U.S. HIGHWAY 101

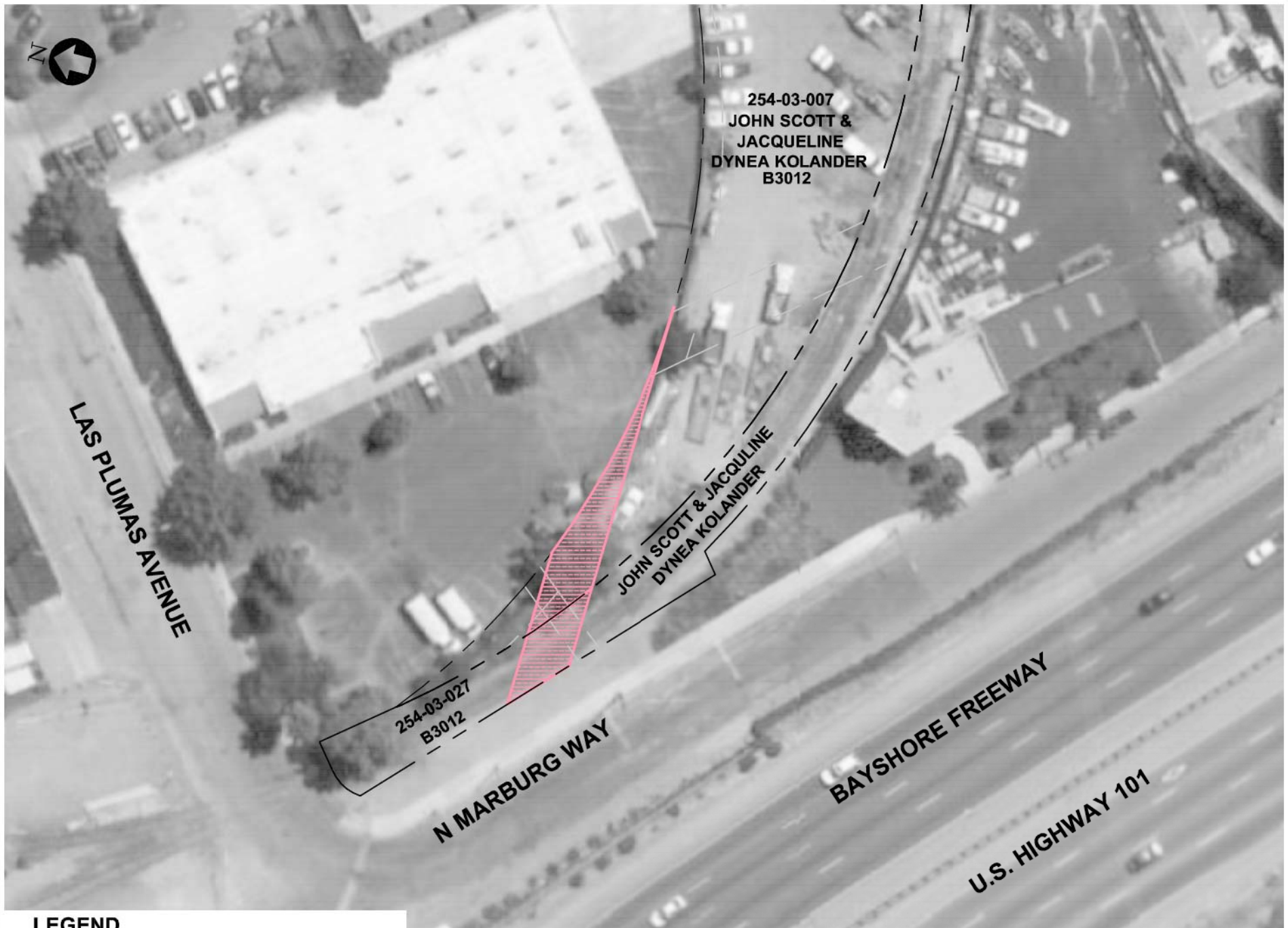
U. P. R. R.

LEGEND

-  PROPOSED AREA OF ADDITIONAL ROW ACQUISITION FOR SVRT FACILITIES (FEE) (3,440 SF)
-  PROPOSED PUBLIC SERVICE EASEMENT (PSE) (4,913 SF) (FIRE - 804 SF)



TRAN_R Jan 12, 2011 - 4:39pm W:\USCAD\Projects 2 Design\SWR L5\Works\Kier_VIA\IMPORTANT FILES\RDW\DATUMS\Google_Earth_Maps\Kier_ROW_PARCEL_EXHIBITS\CD01\CD01-B3012-0F.dwg

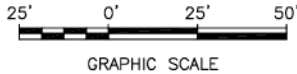


LEGEND



PROPOSED PUBLIC SERVICE EASEMENT (PSE) (1,815 SF)

D-50



GRAPHIC SCALE



LAS PLUMAS AVENUE

254-03-016
MVI SAN JOSE, LLC
B2144

N MARBURG WAY

BAYSHORE FREEWAY
U.S. HIGHWAY 101

LEGEND



PROPOSED AREA OF ADDITIONAL ROW ACQUISITION FOR SVRT FACILITIES (FEE) (39,256 SF)



PROPOSED PUBLIC SERVICE EASEMENT (PSE) (1,337 SF)



GRAPHIC SCALE