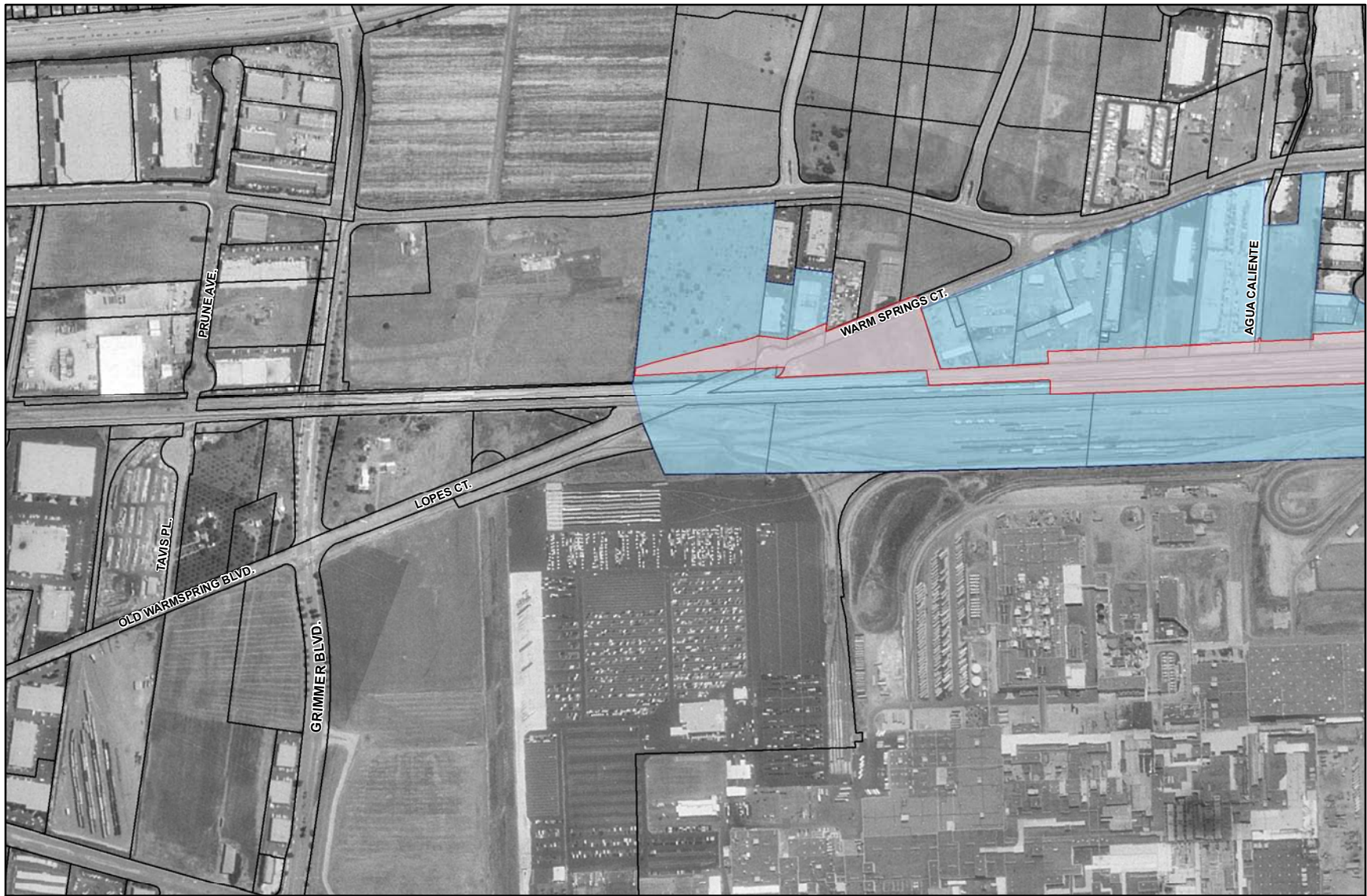
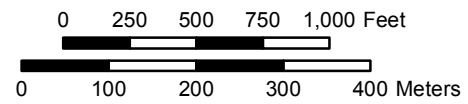


Appendix G

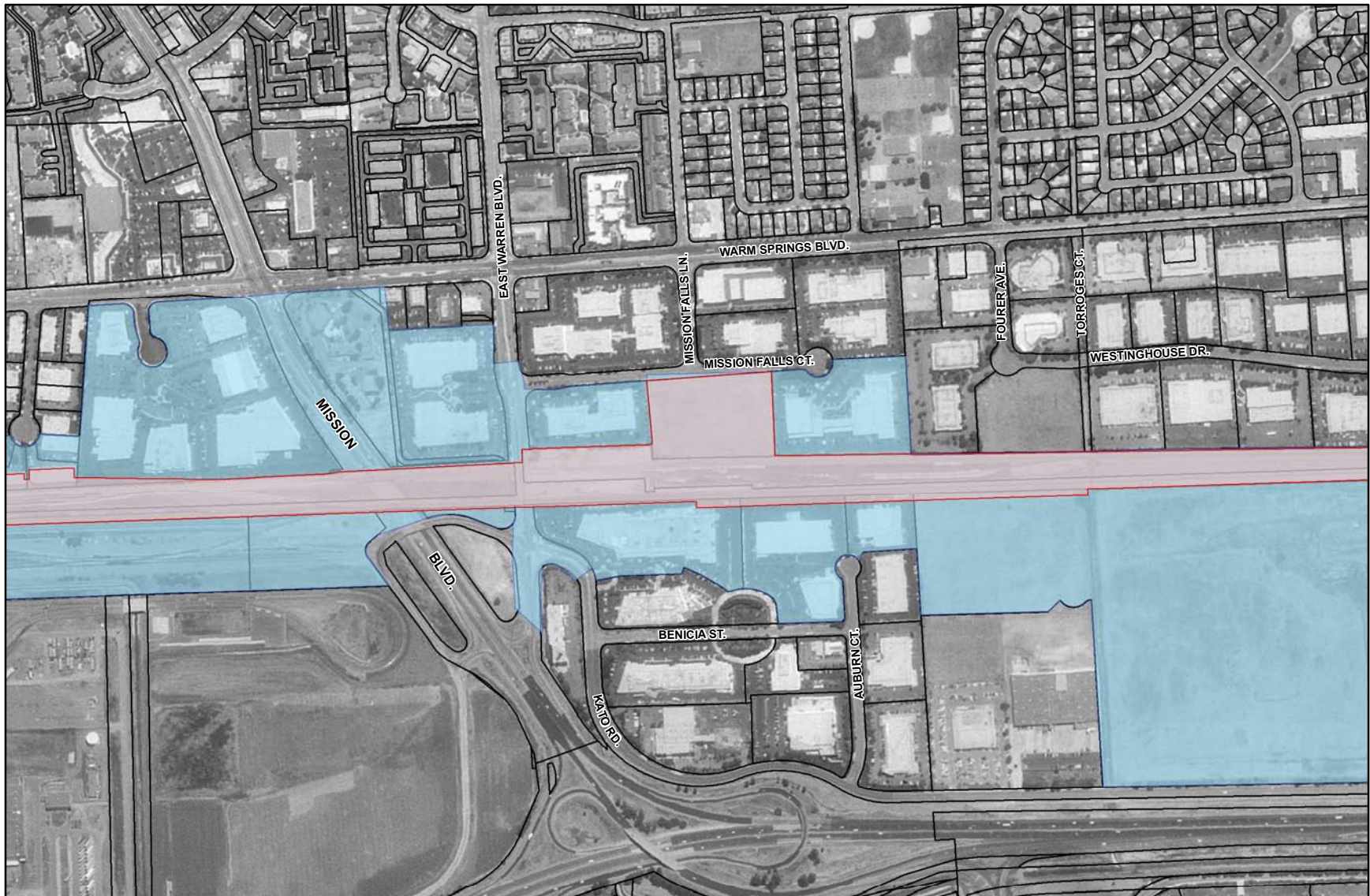
Maps of Areas of Potential Effect



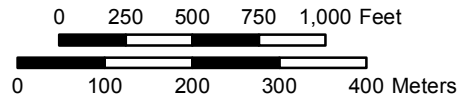
September 2010
 Archaeological APE
 Architectural APE



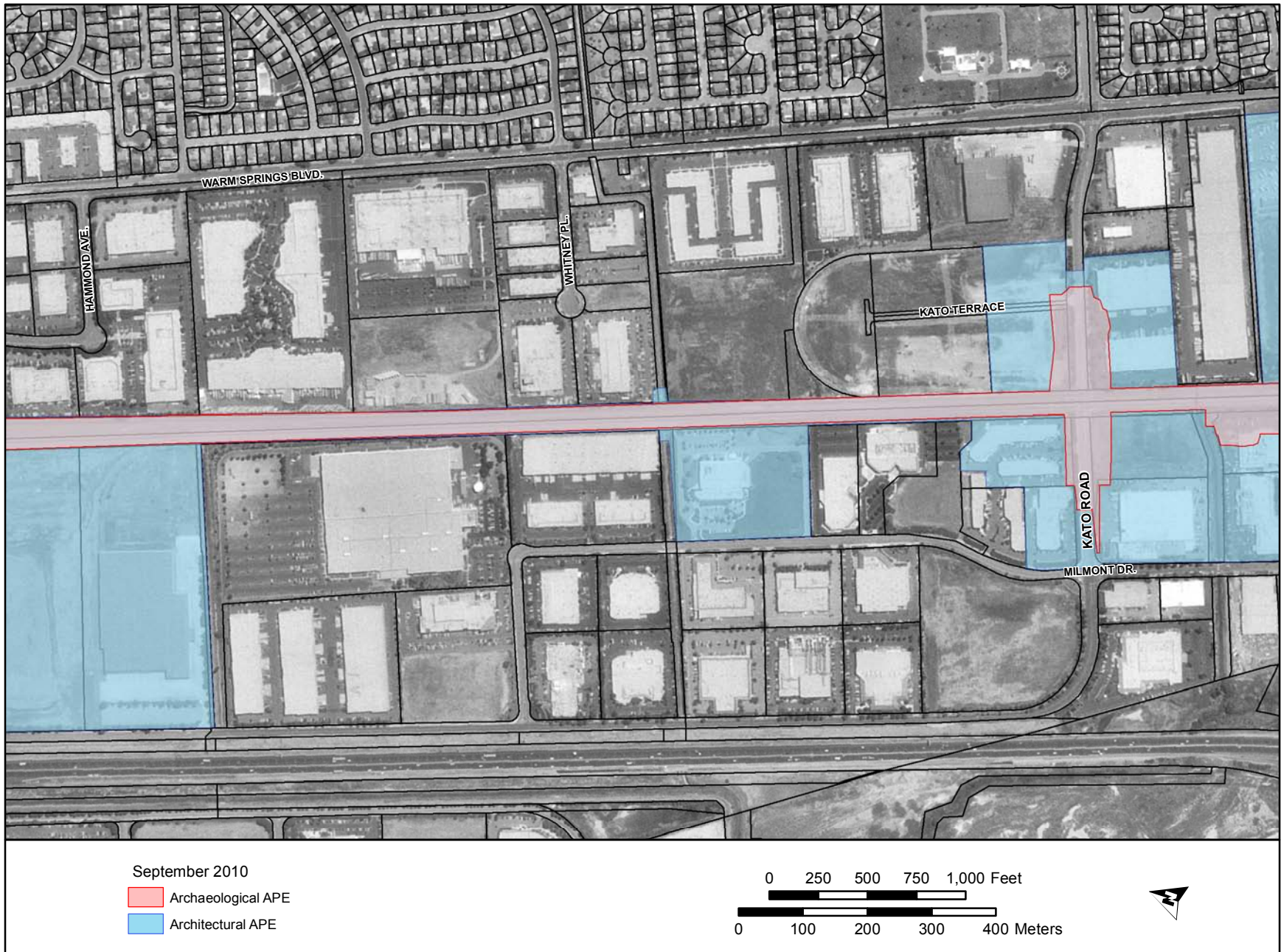
Silicon Valley Rapid Transit Corridor Project - Revised Archaeological and Architectural Area of Potential Effects (Map 1 of 10)



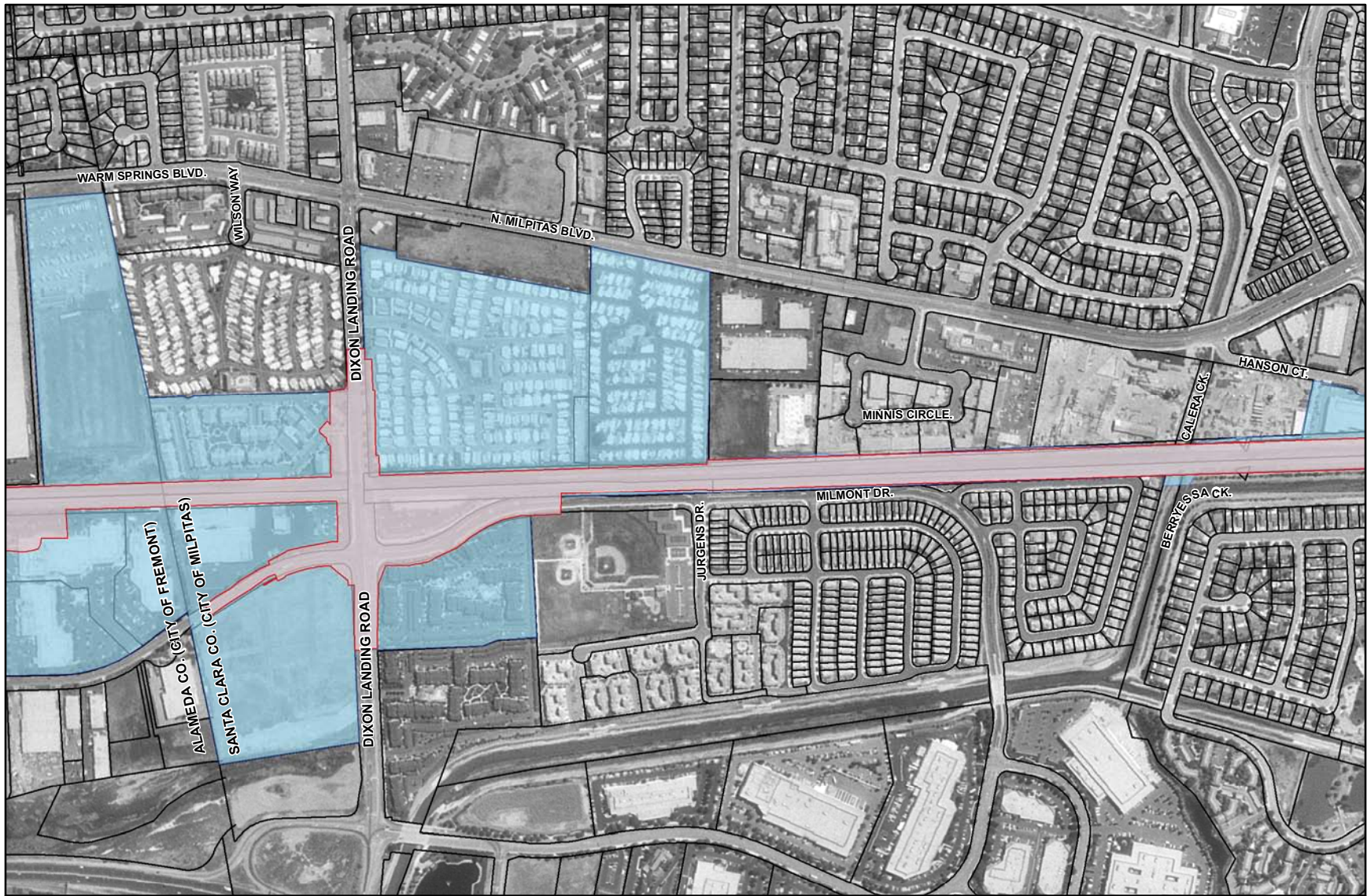
September 2010
 Archaeological APE
 Architectural APE



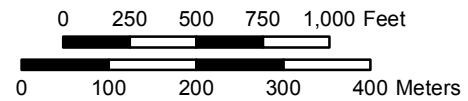
Silicon Valley Rapid Transit Corridor Project - Revised Archaeological and Architectural Area of Potential Effects (Map 2 of 10)



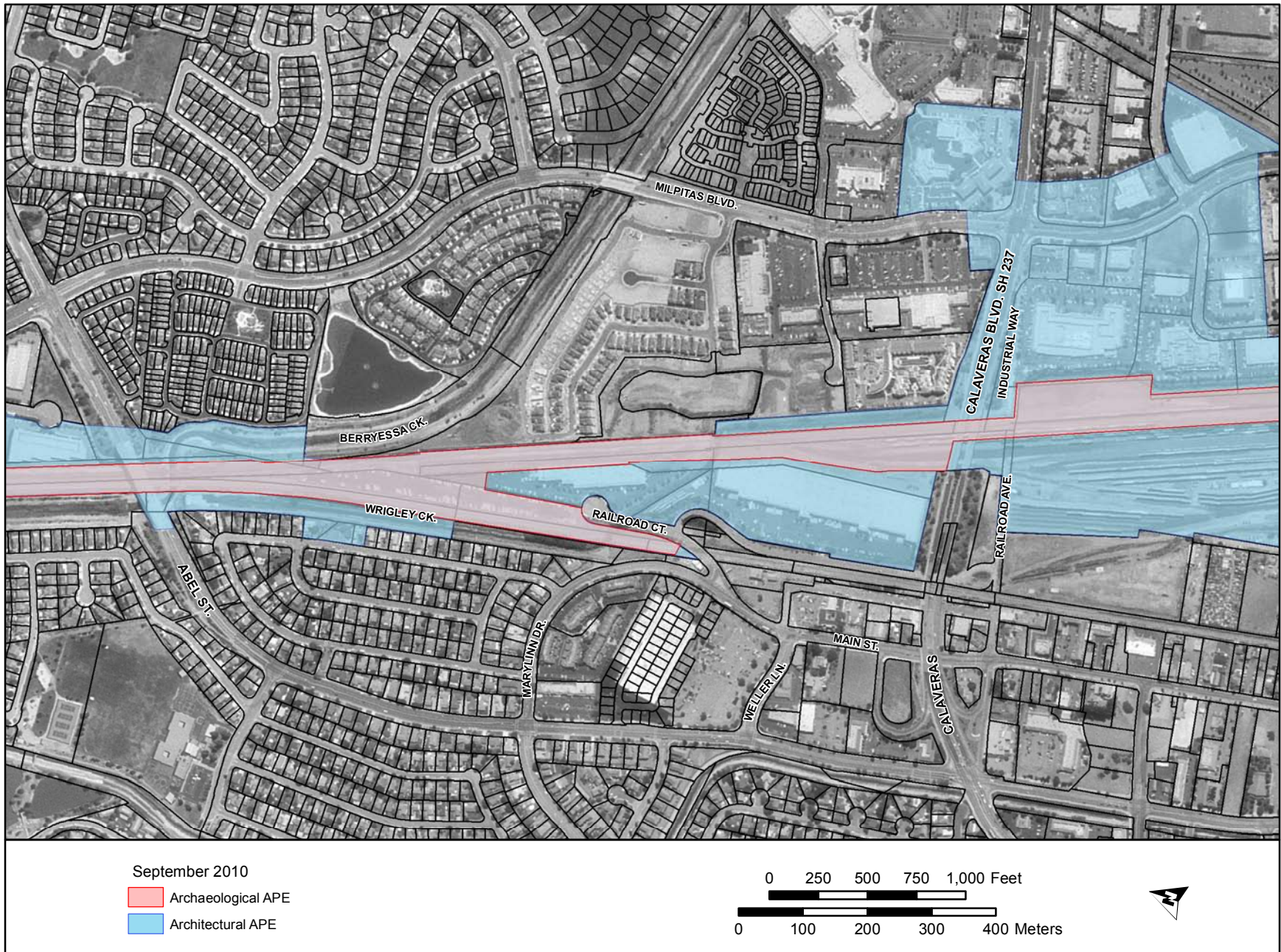
Silicon Valley Rapid Transit Corridor Project - Revised Archaeological and Architectural Area of Potential Effects (Map 3 of 10)



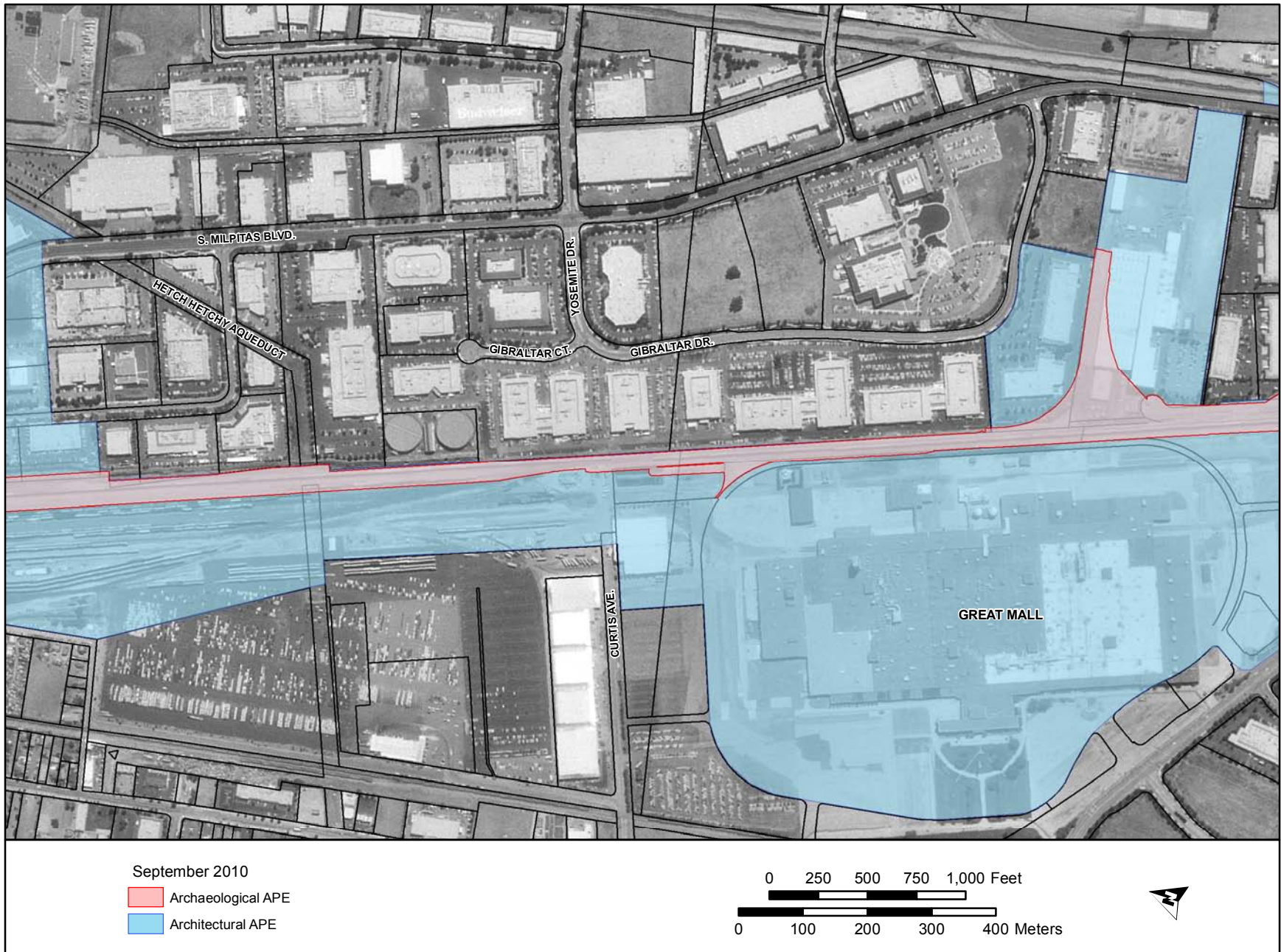
September 2010
 Archaeological APE
 Architectural APE



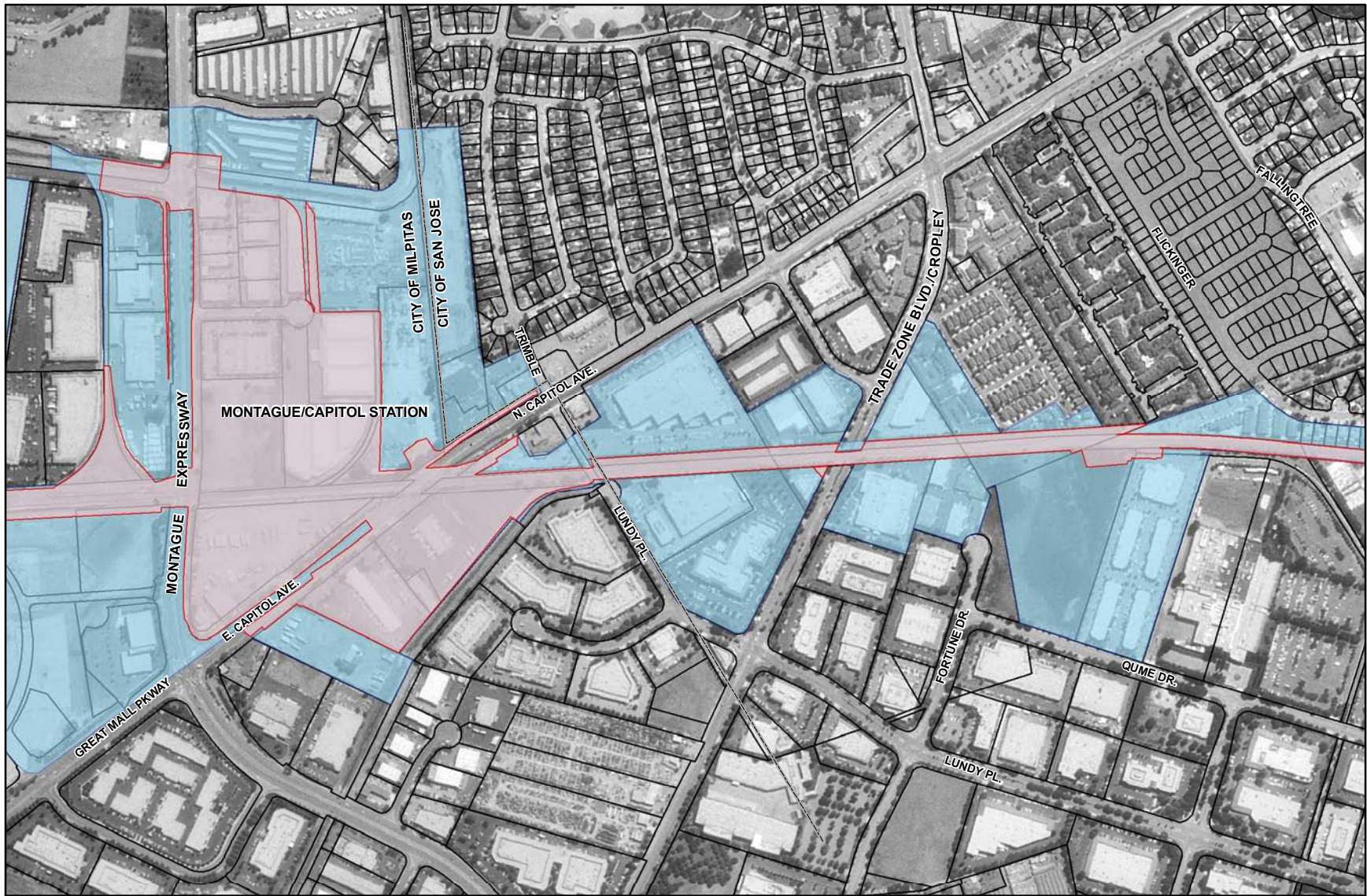
Silicon Valley Rapid Transit Corridor Project - Revised Archaeological and Architectural Area of Potential Effects (Map 4 of 10)



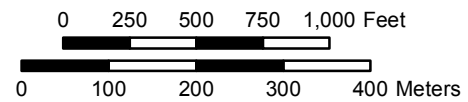
Silicon Valley Rapid Transit Corridor Project - Revised Archaeological and Architectural Area of Potential Effects (Map 5 of 10)



Silicon Valley Rapid Transit Corridor Project - Revised Archaeological and Architectural Area of Potential Effects (Map 6 of 10)



September 2010
 Archaeological APE
 Architectural APE

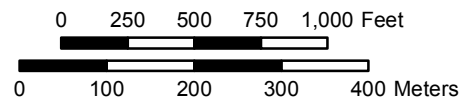


Silicon Valley Rapid Transit Corridor Project - Revised Archaeological and Architectural Area of Potential Effects (Map 7 of 10)



September 2010

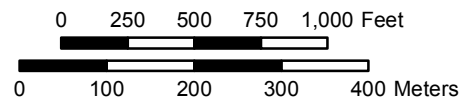
- Archaeological APE
- Architectural APE



Silicon Valley Rapid Transit Corridor Project - Revised Archaeological and Architectural Area of Potential Effects (Map 8 of 10)



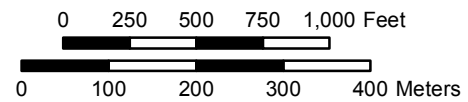
September 2010
 Archaeological APE
 Architectural APE



Silicon Valley Rapid Transit Corridor Project - Revised Archaeological and Architectural Area of Potential Effects (Map 9 of 10)



September 2010
 Archaeological APE
 Architectural APE



Silicon Valley Rapid Transit Corridor Project - Revised Archaeological and Architectural Area of Potential Effects (Map 10 of 10)



Figure 23. Archaeological Study Area and Area of Potential Effects (20 of 20).