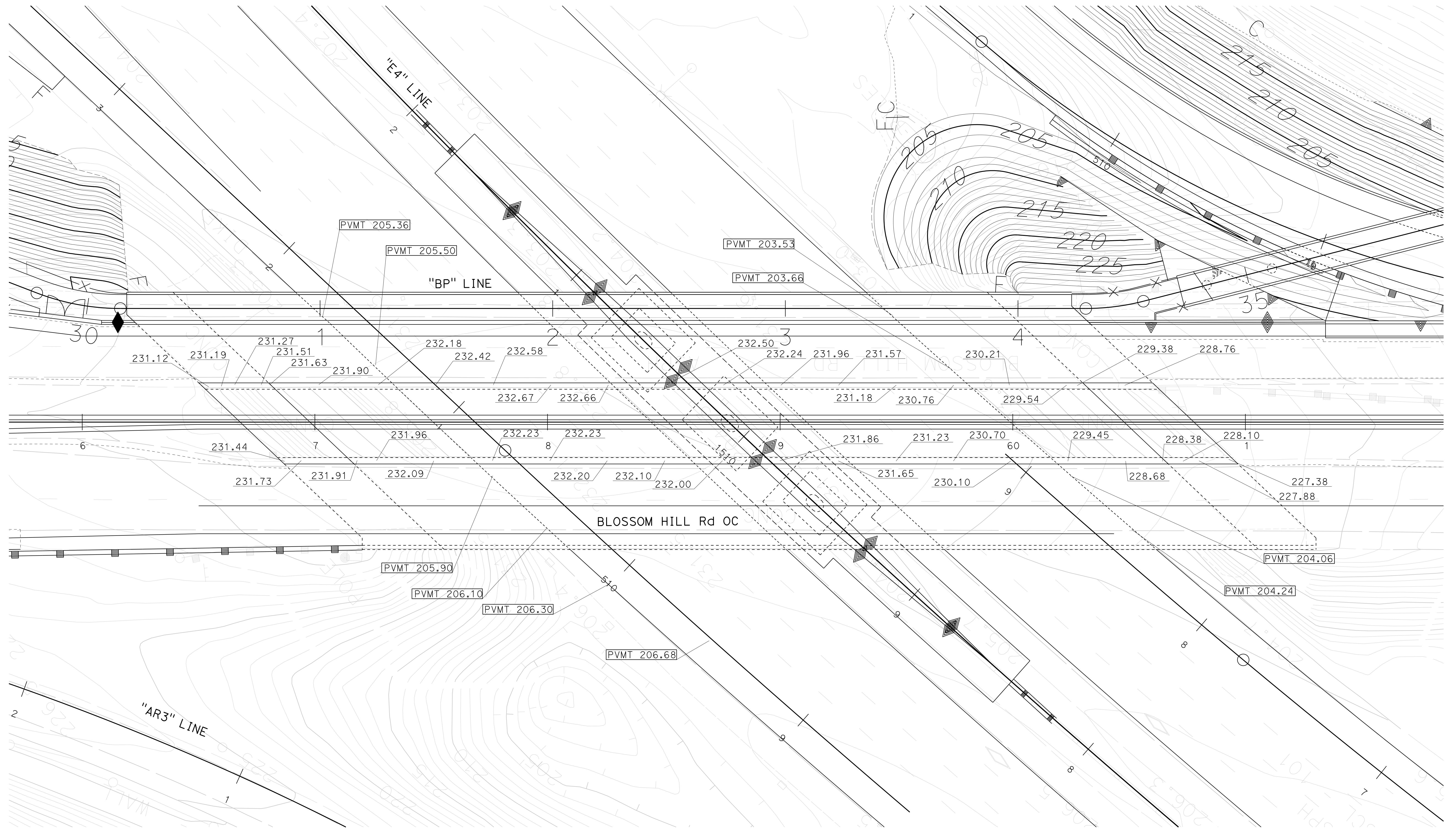


NOTE: FIELD SURVEYED ELEVATIONS ON BLOSSOM HILL RD, OC ARE SHOWN AS "123.45"  
FIELD SURVEYED ELEVATIONS ON ROUTE 101 ARE SHOWN AS [PVMT 123.45]  
ALL OTHER TOPOGRAPHIC INFORMATION WAS OBTAINED BY AERIAL PHOTOGRAMMETRIC METHODS.



**FIELD SURVEY  
ELEVATION EXHIBIT**  
SCALE: 1" = 20'